

A primer to phylogenetic analysis using
Phylip package

Jarno Tuimala
Fourth Edition

All rights reserved. The PDF version of this book or parts of it can be used in Finnish universities as course material, provided that this copyright notice is included. However, this publication may not be sold or included as part of other publications without permission of the publisher.

© The author and
CSC – Scientific Computing Ltd.
2005

ISBN 952-5520-02-1

Index

Index	3
Introduction	4
What is Phylip?	4
Installation	4
User interface	5
Getting started – datafiles and programs	6
Always keep records	6
Sequence alignment	6
Font files	7
Running Phylip programs	7
Essential programs	8
Quick start	10
Distance methods	10
Tree drawing	12
Amino acid sequences	13
Basic analyses in more detail	14
Distance methods	14
Parsimony methods	19
Maximum likelihood methods	24
Resampling procedure	28
Drawing the tree	32
Advanced topics	34
User trees	34
Estimating transition/transversion ratio	36
Estimating base frequencies	37
Testing molecular clock	38
Inferring ancient states of sequence sites	39
Statistical tests of trees	40
LogDet-distance	41
Computing topological distances between trees	41
Weighting	44
Dnaml, HMM, gamma distribution and rate heterogeneity	46
Multiple outgroups	47
Error messages	47
Scripting	49
Recommendations	51
Some pragmatic warnings	51
Phylip programs	53
Flow charts	54

Introduction

The purpose of this tutorial is to demonstrate how to use Phylip, a collection of phylogenetic analysis software, and some of the options that are available. This tutorial is not intended to be a course in phylogenetics, although some phylogenetic concepts will be discussed briefly. There are other books available which cover the theoretical sides of the phylogenetic analysis, but the actual data analysis work is less well covered.

Here we will mostly deal with molecular sequence data analysis in the current Phylip version 3.62.

What is Phylip?

Phylip is a comprehensive phylogenetic analysis package created by Joseph Felsenstein at the University of Washington. This package can do many of the phylogenetic analyses available in the literature today. Methods that are available in the package include parsimony, distance matrix, and likelihood methods, including bootstrapping and consensus trees. Data types that can be handled include molecular sequences, gene frequencies, restriction sites, distance matrices, and 0/1 (binary) discrete characters.

Installation

Phylip is freely available from <http://evolution.genetics.washington.edu/phylip.html>. It ships with a comprehensive manual covering the usage of different programs.

If you're using a *Windows machine*, installation is easy. Download the three zip-files (phylipw.zip, phylipx.zip, phylipy.zip), and extract them to a preferred directory. The subdirectory exe contains all the programs. Manual can be found from the subdirectory doc.

For *Macintosh OSX* you may download the packaged executables (phylipox1.sit and phylipox2.sit) and expand them into a suitable folder. Alternatively, you may compile the programs from their sources as outlined in the UNIX installation below. There are source codes and ready made compilations available for older Macintosh systems, Mac OS 8 or 9, also.

Installation for *UNIX systems* is also quite straight-forward. Download the source code and documentation package (phylip-3.6.tar.gz) into a suitable folder. Unzip the package with gzip utility (`gzip -d phylip-3.6.tar.gz`) and expand the tar ball (`tar xvf phylip-3.6.tar`). Move to the newly formed directory containing the source codes (`cd phylip-3.6/src`). The folder contains a file called Makefile. Installation of the Phylip programs is done simply by typing `make install`. For gcc compiler the Makefile may need to be edited (emacs Makefile) a little, but after that the compilation works fine. For gcc, change the Makefile lines to be as follows:

```
# Here are some possible CFLAGS statements:
#
#
#A minimal one
#CFLAGS =
#
# An optimized one for gcc
CFLAGS = -O3 -fomit-frame-pointer
```

```
# The next two assignments are the invocations of the compiler for the
# ordinary compiles and the tree-drawing programs, CC and DC
#
# This one specifies the "cc" C compiler
#CC      = cc $(CFLAGS)
#
# To use GCC instead, if it is not the compiler that "cc" invokes
CC      = gcc $(CFLAGS)
#
# This one specifies the "cc" C compiler for the Draw programs
#DC      = cc $(DFLAGS)
#
# To use GCC instead, if it is not the compiler that "cc" invokes
DC      = gcc $(DFLAGS)
```

The draw programs (drawgram, and drawtree) need an installation of the X Windows development environment (Athena Widgets), and without it you'll get some error messages during installation, *e.g.*,

```
ld32: WARNING 84 : /usr/lib32/libX11.so is not used for resolving any symbol.
ld32: WARNING 84 : /usr/lib32/libXaw.so is not used for resolving any symbol.
ld32: FATAL 12 : Expecting n32 objects: draw.o is of unknown type.
```

Thus, you might need to change the path to the Widgets in the Makefile line which reads as (DLIBS= ...):

```
# if the Xlib library for the X windowing system is somewhere
# unexpected, you may have to change the path /usr/X11R6/lib in this one
#
# For gcc for Linux with X windows development packages installed
# or for MacOS X with X windows installed
DLIBS= -L/usr/X11R6/lib/ -lX11 -lXaw -lXt
```

After a successful installation, two new directories appear under the phylip-3.6 directory. These contain documentation (doc) and executables (exe).

There are more advice on installing the Phylip package in the UNIX environment in the manual, so read it meticulously before proceeding. If everything else fails, you might want to check the site <http://www.biolinux.org/phylip.html> for ready compilations. A fresh compilation on your machine might, however, be much faster than these.

User interface

The programs are controlled through a menu, which asks the users which options they want to set, and allows them to start the computation. The data are read into the program from a text file, which the user can prepare using any word processor or text editor (but it is important that this text file *not* be in the special format of that word processor - it should instead be in "flat ASCII" or "Text Only" format). Some sequence alignment programs, like ClustalX and T-Coffee, can write data files in the PHYLIP format.

Most of the programs look for the data in a file called "infile". If they do not find this file they then ask the user to type in the file name of the data file. Output is written onto special files with names like "outfile" and "treefile". Trees written onto "treefile" are in the Newick format, an informal standard agreed to in 1986 by authors of a number of major phylogeny packages (Felsenstein, PHYLIP documentation).

Getting started – datafiles and programs

Always keep records

It is very important to keep record of lab-procedures you have done, but it is even more so with computer analyses. You might easily get confused with many many result files, especially, if you have not given them informative names. And, the computer can crash, or the hard-drive may become corrupt, and you can lose your work. After such incidents it is easier to recover the work you have done, if you have kept a good analysis record.

So, always keep records. It indicates you have been working.

Sequence alignment

Phylip programs read the aligned sequences in Phylip-format. Usually you can recognize the files in this format from the .phy-extension associated with the files. Aligned sequences in the suitable format can be produced, e.g., with ClustalX program, which is freely available from <http://www-igbmc.u-strasbg.fr/BioInfo/ClustalX/Top.html>. Just be sure that you save the aligned sequences in Phylip-format.

If you need to edit the alignment (with text-editor) or to do some analyses in the other programs that do not read Phylip-format, save the alignment also in the .aln-format (Clustal-format). The editing of the Clustal alignment format is easier than the editing of Phylip-format, and Clustal will readily read in the .aln-format, if you later need to convert the edited sequences into some other format.

Any multiple sequence alignment can also be manually reformatted with a text editor. The format requirements for Phylip are very stringent, and any deviation will result in a program that hangs, usually with the error message "Unable to allocate memory".

The file must conform to the following (Felsenstein, PHYLIP documentation):

1. The file begins with the information about the number of sequences and the number of nucleotides or amino acids in the alignment.
2. The sequence names must be exactly 10 characters long - spaces are allowed in the end.
3. Gaps must be indicated by - .
4. Missing data or missing information (no sequence) is indicated by ?. This is especially important in the end of the data file. Gaps (-) in the end of the data file may lead the programs to crash.
5. Spaces between the alignment blocks are allowed. This normally makes the alignment more readable. Spaces are usually inserted into the alignment every 10 bases or amino acids.
6. Blanks will be ignored, and so will numerical digits. This allows GENBANK and EMBL sequence entries to be read with minimum editing.

Example of the formatted sequences:

	5	100			
Rabbit	??????????	?????????C	CAATCTACAC	ACGGG-GTAG	GGATTACATA
Human	AGCCACACCC	TAGGGTTGGC	CAATCTACTC	CCAGGAGCAG	GGAGGGCAGG
Opossum	AGCCACACCC	CAACCTTAGC	CAATAGACAT	CCAGAAGCCC	AAAAGGCAAG
Chicken	GCCCCGGGAA	GAGGAGGGGC	CCGGCGG-AG	GCGATAAAAG	TGGGGACACA
Frog	GGATGGAGAA	TTAGAGCACT	TGTTCTTTTT	GCAGAAGCTC	AGAATAAACG
	TTTGGATGGT	AG---GATAT	GGGCCTACCA	TGGCGTTAAC	GGGT-AACGY
	TTTCGACGGT	AA---GGTAT	TGGCTTACCG	TGGCAATGAC	AGGT-GACGG
	TTTCGACGGT	AA---GGTAT	TGGCTTACCG	TGGCAATGAC	AGGT-GACGY
	TTTCGACGGT	AA---GGTAT	TGGCTTACCG	TGGCAATGAC	AGGT-GACGG
	TTTCGATGGT	AA---GGTAT	TGGCTTACCG	TGGCAATGAC	AGGT-GACGG

Possible ambiguities (such as N, Y or R nucleotides) are also handled correctly, and do not cause trouble.

Font files

In order to be able to use the tree-drawing tools, the font-files need to be in the same folder as the drawtree or drawgram program(s). If you are using Phylip on PC machine from the same directory it was installed in, you should not encounter any troubles. However, this is not strictly necessary, just remember to copy the font files with tree drawing programs to the same directory. Or, better still rename your favorite fontfile as "fontfile" and keep only it with the tree drawing programs. There are six different fonts available:

font1	simple sans-serif Roman
font2	medium quality sans-serif Roman
font3	high quality sans-serif Roman
font4	medium quality sans-serif Italic
font5	high quality sans-serif Italic
font6	Russian Cyrillic

Running Phylip programs

The programs are used in a sequential way. The output from the first program is used as an input in the next program. The trick is to know how to use the programs in suitable combinations. See the flow charts in the end of this book for some suggestions.

In windows, the Phylip programs can be invoked by double-clicking on the icon or by typing the name of the program on the command line. It is advisable to use programs from the command line, because then you will be better able to see, *e.g.*, the appearing error messages. In NT-line Windows versions (NT, 2000 and XP) DOS prompt, *i.e.*, command line, can be invoked from Start -> All Programs -> Accessories -> Command Prompt.

Most Phylip programs run in the same way. The input for a program is taken from a file called "infile" - if the program does not find this file it then asks the user to type in the file name of the data file. The results are written in a file called "outfile". Some programs may write both "outfile" and a file called "outtree" or "plotfile".

Because most of the programs use the default names for the input and output files, you need to be sure to rename the files you want to save before proceeding to further analysis. Otherwise you risk losing your results. For example, you get a distance matrix ("outfile")

from the program dnadist, but you want to try different settings for the matrix calculations. Then, before doing the matrix calculation again, rename "outfile" with dnadist_out_F84 or something similar, so that you can tell different analysis results apart after you have ceased to work.

Essential programs

Here is a list of the programs that can be used for the molecular sequence data analysis. The programs are divided into the method categories. The choice of the correct analysis method is left for the user.

Distance methods

These programs are intended to be used sequentially. First a distance matrix is calculated by dnadist or protdist program from the multiple sequence alignment. The matrix is then transformed into a tree by fitch, kitsch or neighbor program. Programs dnadist and protdist create a file "outfile". Before running fitch, kitsch or neighbor, "outfile" should be renamed, either as "infile" or with another file name. Fitch, kitsch and neighbor programs create both "outfile" and "outtree".

dnadist	DNA distance matrix calculation
protdist	Protein distance matrix calculation
fitch	Fitch-Margoliash tree drawing method without molecular clock
kitsch	Fitch-Margoliash tree drawing method with molecular clock
neighbor	Neighbor-Joining and UPGMA tree drawing method

Character based methods

These programs read in the sequence alignment, and produce either one or multiple trees in the output files "outfile" and "outtree".

dnapars	DNA parsimony
dnapenny	DNA parsimony using branch-and-bound
dnaml	DNA maximum likelihood without molecular clock
dnamlk	DNA maximum likelihood with molecular clock
protpars	Protein parsimony
proml	Protein maximum likelihood

Resampling tool

This program reads in a sequence alignment, and generates a specified number of random samples into a file "outfile". These random samples are usually used in subsequent analysis as a sequence alignment file with the option M ("use multiple datasets") turned on.

seqboot	Generates random samples by bootstrapping or jack-knifing
---------	---

Tree drawing

These programs draw a tree from the specifications ("outtree") in the Newick-format. For example, the specification can be a file produced by the program dnaml. Drawgram and drawtree produce plotfile, whereas retree saves the result in a file "outtree" (so "outtree" can not be used as an input to this program).

drawgram	Draws a rooted tree
----------	---------------------

drawtree	Draws an unrooted tree
retree	Interactive tree-rearrangement

Consensus trees

This program constructs a consensus tree from multiple trees. For example, dnapars can produce multiple trees, which can be summarized by the program Consense. Also the results of the bootstrapping are summarized by the program Consense as a majority rule tree.

consense	Draws consensus trees from multiple trees
----------	---

Tree distances

This program computes, *e.g.*, a topology-based distance between two or more trees. The distance can be used to assess or compare the results from different analyses.

treedist	Computes distances between trees based on tree topology
----------	---

Quick start

Here a DNA sequence data is used as an example. In the example, three programs are used to construct and plot a tree by neighbor joining (a distance method) using the F84 evolutionary model. Details about other methods are available in the succeeding sections.

Distance methods

Align your DNA sequences and save the alignment in Phylip-format as “alignment.phy”. Start the program dnadist by typing “dnadist” to the command prompt or double clicking on the program’s icon.

First dnadist (and all the other programs also) checks whether there is a file “infile” in the directory you started the program in. If it does not find “infile” it asks you to type in the name of the sequence alignment file.

```
dnadist: can't find input file "infile"
Please enter a new file name> alignment.phy
```

Note that the programs are easiest to use, if both the programs and the datafiles are in the same folder as in the example above. If datafiles are in a different folder, you can type in the whole path to the file, e.g., if the files were on D:\data you would type

```
dnadist: can't find input file "infile"
Please enter a new file name> D:\data\alignment.phy
```

All Phylip programs are menu-driven. Below is the menu written by dnadist. Every line in the menu starts with a capital letter or number. You can change the settings of the program by typing in the letter or the number in front of the option you would like to change. For example, typing “d” and pressing Enter, would cycle through different evolutionary models implemented in dnadist. After you are satisfied with the settings (for this quick start, do not change any options), you should type in “y” and press Enter. This starts the run.

Nucleic acid sequence Distance Matrix program, version 3.61

Settings for this run:

D	Distance (F84, Kimura, Jukes-Cantor, LogDet)?	F84
G	Gamma distributed rates across sites?	No
T	Transition/transversion ratio?	2.0
C	One category of substitution rates?	Yes
W	Use weights for sites?	No
F	Use empirical base frequencies?	Yes
L	Form of distance matrix?	Square
M	Analyze multiple data sets?	No
I	Input sequences interleaved?	Yes
0	Terminal type (IBM PC, ANSI, none)?	IBM PC
1	Print out the data at start of run	No
2	Print indications of progress of run	Yes

Y to accept these or type the letter for one to change
y

Dnadist prints indications of the run (below). After it has finished calculating all the pairwise distances between the sequences, it tells you so (“Done.”). These pairwise distances are saved in a file “outfile”. The file contains just plain text, and you can rename the file as “outfile.txt” so that it open automatically in Notepad when you double-click it.

```

Distances calculated for species
Rabbit      ....
Human       ...
Opossum     ..
Chicken     .
Frog

```

Distances written to file

Done.

Next, rename “outfile” as “infile”, and run the program neighbor (type in “neighbor”). The next menu should appear. Now, neighbor has read the pairwise distances from the file “infile”, and does not ask you for a new filename. You can again modify the settings to your liking, but for this quick start just type in “y” and press Enter.

Neighbor-Joining/UPGMA method version 3.61

Settings for this run:

```

N      Neighbor-joining or UPGMA tree?  Neighbor-joining
O              Outgroup root?  No, use as outgroup species  1
L      Lower-triangular data matrix?  No
R      Upper-triangular data matrix?  No
S              Subreplicates?  No
J      Randomize input order of species?  No. Use input order
M      Analyze multiple data sets?  No
0      Terminal type (IBM PC, ANSI, none)?  IBM PC
1      Print out the data at start of run  No
2      Print indications of progress of run  Yes
3              Print out tree  Yes
4      Write out trees onto tree file?  Yes

```

Y to accept these or type the letter for one to change
y

Like dnadist, neighbor also prints out indications of the run. After completing the analysis, the program tells you so (“Done.”).

```

Cycle  2: OTU   4 (  0.62698) joins OTU   5 (  0.95492)
Cycle  1: OTU   3 (  0.73871) joins node  4 (  0.17009)
last cycle:
  OTU   1 ( 0.05116) joins OTU   2 ( 0.23064) joins node  3 ( 0.12944)

```

Output written on output file

Tree written on tree file

Done.

The tree is now contained in the files “outfile” and “outtree”. You can view the graphical tree in outfile by opening it in some text editor. Neighbor has now drawn the following tree from our example data set.

```

      +-----Opossum
+---2
!  !   +-----Chicken
!  +---1
!      +-----Frog
!
3-Rabbit
!
+-----Human

```

Tree drawing

Next you can draw a nicer looking graphical tree from the file “outtree” using the program drawtree. First, rename the file “outtree” as “intree”, and start the program drawtree. Drawtree first searches for a file called “fontfile” from the current directory, and if it is unable to find it, it asks for the name of the fontfile. After specifying that, the menu of the program appears. Now, you should change the final plotting device as MS-Windows Bitmap using the option P. Program also asks for the dimensions of the tree – you might initially try 640 x 400. The settings are accepted by typing in “y” and pressing Enter.

DRAWTREE from PHYLIP version 3.61

```

Reading tree ...
Tree has been read.
Loading the font ...
Drawtree: can't find font file "fontfile"
Please enter a new file name> font1
Font loaded.

```

Rooted tree plotting program version 3.61

```

Here are the settings:
O  Screen type (IBM PC, ANSI):  IBM PC
P      Final plotting device:  Postscript printer
V      Previewing device:  MS Windows display
H      Tree grows:  Horizontally
S      Tree style:  Phenogram
B      Use branch lengths:  Yes
L      Angle of labels:  90.0
R      Scale of branch length:  Automatically rescaled
D      Depth/Breadth of tree:  0.53
T      Stem-length/tree-depth:  0.05
C      Character ht / tip space:  0.3333
A      Ancestral nodes:  Weighted
F      Font:  Times-Roman
M      Horizontal margins:  1.65 cm
M      Vertical margins:  2.16 cm
#      Pages per tree:  one page per tree

```

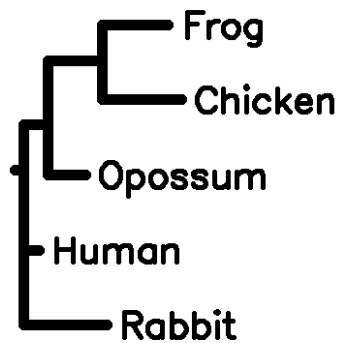
```

Y to accept these or type the letter for one to change
y

```

Drawtree opens a new window, where you can see a preview of the tree. If you’re satisfied with the results, select from the File-menu (in the same newly-opened window) “plot”. A new file (“plotfile”) should now appear in the current directory. If you rename it as “plotfile.bmp” you would be able to open it in some graphics package for more modifications.

The final picture looks like this:



The length of the branch is the number of nucleotide or amino acid changes that has happened in that particular branch in the tree. The number of changes is estimated using the evolutionary model specified in the dnadist program.

Amino acid sequences

The sequence of the programs is similar to the presented one with one important exception. When using amino acid sequences for inferring phylogenies with distance methods, the distance matrix is calculated using program protdist, not dnadist.

Basic analyses in more detail

Before proceeding further, please read Getting started and Quick start. They contain relevant information, if you haven't used Phylip earlier.

There are three different ways to analyze DNA or amino acid sequence data in Phylip. Parsimony and maximum likelihood are character based methods, which means that they treat every single site of the multiple sequence alignment independently. Distance methods summarize the differences between sequences by calculating a pair wise distance measure between all aligned sequences. After the data-analysis and tree-drawing, the validity of data can (or should, according to some) be assessed by a bootstrap analysis.

Here we present examples of these methods.

The programs can be invoked by double-clicking on their icons. If you have done some analyses before within the same folder, the program detects that "outfile" already exists, and it ask you to:

```
dnadist: the file "outfile" that you wanted to
        use as output file already exists.
        Do you want to Replace it, Append to it,
        write to a new File, or Quit?
        (please type R, A, F, or Q)
```

Replace means to overwrite, Append adds the new results in the end of an existing file, and File ask for a new file name. You can also quit, if you want to check the files before proceeding.

Distance methods

For the distance method analysis you'll need at least two programs. DNAdist or protdist calculates a matrix of pair wise distances between every sequence in the file. The tree is inferred from those distances by Neighbor, Fitch or Kitsch program.

DNA data

The DNAdist program writes out a menu:

Nucleic acid sequence Distance Matrix program, version 3.61

Settings for this run:

D	Distance (F84, Kimura, Jukes-Cantor, LogDet)?	F84
G	Gamma distributed rates across sites?	No
T	Transition/transversion ratio?	2.0
C	One category of substitution rates?	Yes
W	Use weights for sites?	No
F	Use empirical base frequencies?	Yes
L	Form of distance matrix?	Square
M	Analyze multiple data sets?	No
I	Input sequences interleaved?	Yes
0	Terminal type (IBM PC, ANSI, none)?	IBM PC
1	Print out the data at start of run	No
2	Print indications of progress of run	Yes

Y to accept these or type the letter for one to change

The settings can be changed by typing in the letter before the option, and pressing Return. For example, typing "d" and return, would cycle through the different distance calculation

methods. These distances are also called evolutionary models. Evolutionary models are mathematical formulas which try to compensate for the multiple substitution problem and transition-transversion bias.

Briefly, Jukes-Cantor assumes that all substitutions are equally likely to happen. Kimura has two different change rates (rate parameters), one for transitions, and the other for transversions. These models also assume that the equilibrium frequencies of all the bases are 0.25. F84 has two rate parameters, one for transitions, and the other for transversions, but also allows the equilibrium frequencies of the bases to differ from each other. LogDet-distance should be used if there are (large) base frequency differences between sequences in the tree. The LogDet distance cannot cope with ambiguity codes. It must have completely defined sequences.

The transition/transversion ratio (s/v) can be modified if more detailed data is available on the s/v ratio. If not, the s/v ratio of 1-2 is often a good approximation of the situation with most of the genes.

Usually the phylogenetic methods assume that all the sites are evolving at the same speed. This is clearly an unrealistic assumption. For example, the third codon positions evolve with a higher speed than second positions. That is because most of the substitutions in the third position are selectively neutral whereas substitutions in the second codon position often lead to amino acid changes. This rate heterogeneity is often compensated by using gamma distribution. The shape of the gamma distribution is defined by a parameter alpha. If you activate option "g" you'll be prompted to enter this shape parameter:

Coefficient of variation of substitution rate among sites (must be positive)

In gamma distribution parameters, this is 1/(square root of alpha)

If you know alpha, you can calculate the prompted CV by the equations (Felsenstein, PHYLIP documentation):

$$1 / \text{sqrt}(\alpha) = \text{CV}$$
$$\alpha = (1 / \text{CV})^2$$

A good approximation of the alpha for most of the protein encoding genes is 0.5, but you can also estimate this value using programs such as Treepuzzle, which is not a part of Phylip package. The use of the gamma distribution is still disputed, and you should be careful when using this option.

Another layer of rate variation also is available. The option "c" allows user-defined rate categories. The user is prompted for the number of user-defined rates, and for the rates themselves, which cannot be negative but can be zero. These numbers are defined relative to each other, so that if rates for three categories are set to 1 : 3 : 2.5 this would have the same meaning as setting them to 2 : 6 : 5. The assignment of rates to sites is then made by reading a file whose default name is "categories". It should contain a string of digits 1 through 9. A new line or a blank can occur after any character in this string.

Thus the categories file might look like this:

```
122231111122411155115533333444
```

“The user can assign categories of rates to each site (for example, we might want first, second, and third codon positions in a protein coding sequence to be three different categories. This is done with the categories input file and the option "c". We then specify (using the menu) the relative rates of evolution of sites in the different categories. For example, we might specify that first, second, and third positions evolve at relative rates of 1.0, 0.8, and 2.7.” (Felsenstein, PHYLIP documentation).

“The weights-option ("w") allows us to specify weights on the individual characters. The weights cause a character to be counted as if it were n characters, where n is the weight. By use of the weights we can give weight to some characters, and drop others from the analysis. In the molecular sequence programs only two values of the weights, 0 or 1 are allowed, except for dnapsars, which accept weights from 0-9...35 (0-9 with numbers and 10-35 with letters). For more information, see the advanced analysis chapter.” (Felsenstein, PHYLIP documentation)

If you want to specify the base frequencies by yourself, you can do that by invoking the option "f". The program then prompts you to type in the frequencies of different bases.

After you have modified the settings to your liking, you can calculate the distance matrix by typing "y" and pressing return.

This will produce a distance matrix with default name "outfile":

```
      5
Rabbit      0.0000  0.2818  0.9386  0.9830  1.2617
Human       0.2818  0.0000  1.0795  1.1496  1.5312
Opossum     0.9386  1.0795  0.0000  1.5380  1.8615
Chicken     0.9830  1.1496  1.5380  0.0000  1.5819
Frog        1.2617  1.5312  1.8615  1.5819  0.0000
```

The "outfile" needs to be renamed, because the programs will go awry, if they try both read and write from and to the same file. After renaming this new file can be used as an input into the Neighbor, Fitch, or Kitsch program.

Neighbor writes out a menu, where you can again change the setting:

Neighbor-Joining/UPGMA method version 3.61

Settings for this run:

N	Neighbor-joining or UPGMA tree?	Neighbor-joining
O	Outgroup root?	No, use as outgroup species 1
L	Lower-triangular data matrix?	No
R	Upper-triangular data matrix?	No
S	Subreplicates?	No
J	Randomize input order of species?	No. Use input order
M	Analyze multiple data sets?	No
0	Terminal type (IBM PC, ANSI, none)?	IBM PC
1	Print out the data at start of run	No
2	Print indications of progress of run	Yes
3	Print out tree	Yes
4	Write out trees onto tree file?	Yes

Y to accept these or type the letter for one to change

At this point, you can specify the outgroup of the tree. Outgroup is usually the closest relative of all the taxa under investigation. For example, if human, chimpanzee and gorilla are under scrutiny, orangutan could be specified as an outgroup. In other words, the sister taxa of the ingroup is often used as an outgroup.

You can also randomize the input order of the sequences with option "j", jumble. Often the input order of the sequences affects the outcome of the analysis. This can be assessed by randomizing the input order. The program also asks you to specify the number of times you want to randomize the input order of the sequences. It is advisable to do jumbling at least 10-100 times, because it almost certainly improves the results.

Also Fitch writes out a menu, where setting can be modified, but the menu looks a bit different:

Fitch-Margoliash method version 3.61

Settings for this run:

D	Method (F-M, Minimum Evolution)?	Fitch-Margoliash
U	Search for best tree?	Yes
P	Power?	2.00000
-	Negative branch lengths allowed?	No
O	Outgroup root?	No, use as outgroup species 1
L	Lower-triangular data matrix?	No
R	Upper-triangular data matrix?	No
S	Subreplicates?	No
G	Global rearrangements?	No
J	Randomize input order of species?	No. Use input order
M	Analyze multiple data sets?	No
0	Terminal type (IBM PC, ANSI, none)?	IBM PC
1	Print out the data at start of run	No
2	Print indications of progress of run	Yes
3	Print out tree	Yes
4	Write out trees onto tree file?	Yes

Y to accept these or type the letter for one to change

Fitch-Margoliash is the distance based optimization method, which mean that it searches for a tree with the smallest variability. Therefore you have the option of using an user-defined

tree with option "u". In this case the program will, as default, read the user-defined tree from the file "intree". This also activates a new option "n". If you choose to use the branch lengths from the user tree, fitch calculates the Sum of squares and Average percent standard deviation for the user-defined tree.

Confirm the setting by typing "y" and pressing Return. Neighbor creates two new files, "outfile" and "outtree".

Outfile contains detailed information about the analysis and its results. It also contains the inferred tree drawn with symbol graphics. Also the estimated branch lengths are reported in the file.

```

5 Populations
Neighbor-Joining/UPGMA method version 3.6
Neighbor-joining method
Negative branch lengths allowed

      +-----Opossum
+---2
!  !  +-----Chicken
!  +---1
!      +-----Frog
!
3-Rabbit
!
+-----Human

```

remember: this is an unrooted tree!

Between	And	Length
-----	---	-----
3	Human	0.23064
3	2	0.12944
2	Opossum	0.73871
2	1	0.17009
1	Chicken	0.62698
1	Frog	0.95492
3	Rabbit	0.05116

File "outtree" contains the actual tree-drawing instructions. It also reports the branch lengths (the numerical values reported after : -marks), which are the same as in the file "outfile".

```
(Human:0.22996,((Frog:0.95134,Chicken:0.63056):0.16672,Opossum:0.74182):0.12891,Rabbit:0.05184);
```

Protein data

The distance method works more or less similarly than with DNA data. The program protdist writes out a menu with modifiable settings. After you have modified them to your liking, the program produces an "outfile", which contains pairwise distances. Those distances can be transformed into a tree as has been described in the DNA data-section.

Protein distance algorithm, version 3.61

Settings for this run:

P	Use JTT, PMB, PAM, Kimura, categories model?	Jones-Taylor-Thornton
G	Gamma distribution of rates among positions?	No
C	One category of substitution rates?	Yes
W	Use weights for positions?	No
M	Analyze multiple data sets?	No
I	Input sequences interleaved?	Yes
0	Terminal type (IBM PC, ANSI)?	IBM PC
1	Print out the data at start of run	No
2	Print indications of progress of run	Yes

Are these settings correct? (type Y or the letter for one to change)

There are five options of evolutionary models to choose from: JTT (Jones, Taylor Thornton), PAM (Dayhoff), PMB, Kimura and categories. PAM model uses the PAM001 model for calculations. JTT and PAM are widely used amino acid substitution matrices (models), and PMB is a much recent model derived from conserved blocks in Blocks database. Kimura model is the plain D-distance (the uncorrected raw distance) and categories is a model put together by Felsenstein. See Phylip documentation for more information.

Computing distances:

CAS1_HUMAN	
CAS1_RABIT	.
CAS1_MOUSE	..
CAS1_BOVIN	...
CAS1_SHEEP
CAS1_PIG

Output written to output file

Parsimony methods

DNA data

The programs available for DNA parsimony are dnapars and dnapenny. The differences between these DNA parsimony programs are in the algorithm. Dnapars searches for the most parsimonious tree by a heuristic algorithm, which does not guarantee that the shortest tree is found. Program dnapenny uses the branch-and-bound algorithm, which guarantees that the shortest tree is found, but takes quite a much computer time.

Program dnaphars is controlled through this menu:

DNA parsimony algorithm, version 3.61

Setting for this run:

U	Search for best tree?	Yes
S	Search option?	More thorough search
V	Number of trees to save?	10000
J	Randomize input order of sequences?	No. Use input order
O	Outgroup root?	No, use as outgroup species 1
T	Use Threshold parsimony?	No, use ordinary parsimony
N	Use Transversion parsimony?	No, count all steps
W	Sites weighted?	No
M	Analyze multiple data sets?	No
I	Input sequences interleaved?	Yes
0	Terminal type (IBM PC, ANSI, none)?	IBM PC
1	Print out the data at start of run	No
2	Print indications of progress of run	Yes
3	Print out tree	Yes
4	Print out steps in each site	No
5	Print sequences at all nodes of tree	No
6	Write out trees onto tree file?	Yes

Y to accept these or type the letter for one to change

“Invoking the option "s" will allow you to specify some options of more or less thorough search. The more thorough search will save multiple equally parsimonious trees without collapsing the branches that do not have support (no evidence of any change happened in that branch), and does rearrangements on all parts of those trees. Less thorough search collapses non-supported branches before rearrangements. This leads to fewer rearrangements and faster analysis. You can even decide to do rearrangements for one tree only. This means that randomly only one of multiple equally parsimonious trees is rearranged, but the search is much more restricted, which not necessarily a good situation.” (Felsenstein, PHYLIP documentation)

Often parsimony analysis produces many equally parsimonious trees, which can then be analyzed more closely with, *e.g.*, maximum likelihood or some other methods. You can specify the number of trees to save with option "v".

Sometimes it is a good practice to limit the number of changes one site can contribute to the tree. This can be accomplished with option "t". With "t" you can specify a threshold over which all the changes are regarded as a threshold number of changes.

Transversion parsimony (option "n") uses only transversions for the parsimony analysis. This tries to remove the bias resulting from the more rapid accumulation of transition substitutions to the DNA.

The option "5" can be used to infer ancient states of sites. If you choose to print sequences at all nodes of the tree, the "outfile" will contain more information than normally:

From	To	Any Steps?	State at upper node
	1		. means same as in the node below it on tree
	1		GTTCAGGGCT -GGGCATAAA AGGCAGAGCA GGGCCAGCTR
1	2	yes	...NR..... .?..... A.RT.....
2	3	yes	..C..CB... ..CA.VDGH D T.V...CV..A.
3	Frog	yes	C..AA.TTTG GC..TGG.TT ..A...A.. T.A..GT..G
3	Chicken	yes	.A.GG.C... .-...CA.CG ..CT.T.C.C .CGGG....A
2	Opossum	yes	..TTG...GC CA..G.....T ..A.T..T.T
1	Human	yes	AGC..... .T...G... .A....T..A
1	Rabbit	yes	..T....A.. T..... -.....G
	1		CTGCTTACAH
1	2	yes	.W.....A.M
2	3	yesC....
3	Frog	yes	.T.A...CA
3	Chicken	yes	GA..C..G.C
2	Opossum	yes	.A..A.C.TA
1	Human	yes	T.....T
1	Rabbit	maybeC

Program dnappenny has a different kind of menu:

Penny algorithm for DNA, version 3.61
branch-and-bound to find all most parsimonious trees

Settings for this run:

H	How many groups of	100 trees:	1000
F	How often to report, in trees:	100	
S	Branch and bound is simple?	Yes	
O	Outgroup root?	No, use as outgroup species	1
T	Use Threshold parsimony?	No, use ordinary parsimony	
W	Sites weighted?	No	
M	Analyze multiple data sets?	No	
I	Input sequences interleaved?	Yes	
0	Terminal type (IBM PC, ANSI, none)?	IBM PC	
1	Print out the data at start of run	No	
2	Print indications of progress of run	Yes	
3	Print out tree	Yes	
4	Print out steps in each site	No	
5	Print sequences at all nodes of tree	No	
6	Write out trees onto tree file?	Yes	

Are these settings correct? (type Y or the letter for one to change)

You can specify ("h") how many hundreds of trees you want to search, and how often the report is printed on the screen ("f").

You can also set the branch-and-bound algorithm to reconsider the order of the species with option "s". This will cause the analysis to take a longer time, but according to Felsenstein "it might prove of use on some data sets [of intermediate messiness]".

Program dnappars gives only a little information during the run:

Adding species:

1. Rabbit
2. Human
3. Opossum
4. Chicken
5. Frog

Doing global rearrangements on all trees tied for best

```
!-----!
.....
.....
```

Output written to output file

Trees also written onto tree file

Done.

Dnapenny gives information about the search in real time, so you can estimate how long the run is going to take:

How many trees looked at so far (multiples of 100):	Length of longest tree found so far	How many trees this long found so far	Approximate percentage searched so far
-----	-----	-----	-----
1	89	1	50 %
2	89	1	100 %

Output written to output file

Trees also written onto tree file

Both programs produce "outfile" and "outtree", but they look a bit different. dnapars infers the branching order of the tree and estimates the branch lengths, but dnapenny only infers the branching order. The length of the tree is on a line "requires a total of xxxx.xx". The shorter value mean a more parsimonious tree.

Thus, the "outfile" and "outtree" of dnapars:

DNA parsimony algorithm, version 3.6

One most parsimonious tree found:

```

                        +-----Frog
                    +-----3
                +-----2
            +-----|-----Chicken
            |         |
            |         +-----Opossum
            |
            1-----Human
            |
            +-----Rabbit
```

requires a total of 3019.000

between	and	length
-----	---	-----
1	2	0.181782
2	3	0.150139
3	Frog	0.347616
3	Chicken	0.304468
2	Opossum	0.291273
1	Human	0.182778
1	Rabbit	0.219167

```
((Frog:0.34762,Chicken:0.30447):0.15014,Opossum:0.29127):0.18178,Human:0.18278,Rabbit:0.21917);
```

look different from those produced by dnapenny:

Penny algorithm for DNA, version 3.6
branch-and-bound to find all most parsimonious trees

requires a total of 3019.000

One most parsimonious tree found:

```
+-----Rabbit
!
!      +---Frog
1      +---3
!  +---2  +---Chicken
!  !  !
+---4  +-----Opossum
!
+-----Human
```

remember: this is an unrooted tree!

```
(Rabbit,(((Frog,Chicken),Opossum),Human));
```

Protein data

Protein parsimony program protpars is comparable to dnapars, and its menu looks very similar:

Protein parsimony algorithm, version 3.61

Setting for this run:

```
U          Search for best tree?  Yes
J  Randomize input order of sequences?  No. Use input order
O          Outgroup root?  No, use as outgroup species  1
T          Use Threshold parsimony?  No, use ordinary parsimony
C          Use which genetic code?  Universal
W          Sites weighted?  No
M          Analyze multiple data sets?  No
I          Input sequences interleaved?  Yes
0  Terminal type (IBM PC, ANSI, none)?  IBM PC
1  Print out the data at start of run  No
2  Print indications of progress of run  Yes
3          Print out tree  Yes
4          Print out steps in each site  No
5  Print sequences at all nodes of tree  No
6          Write out trees onto tree file?  Yes
```

Are these settings correct? (type Y or the letter for one to change)

You can specify the genetic code used for the analysis by option "c". You have an option to choose from universal and four mitochondrial codes.

However, its "outfile" and "outtree" are similar to the output of dnapenny:

Protein parsimony algorithm, version 3.6

One most parsimonious tree found:

```

      +-----CAS1_PIG
      |
      +--5
      |   !   !   +--CAS1_SHEEP
      |   +--3 +--4
      |   !   !   +--CAS1_BOVIN
      |   +--2 !
      |   !   !   +-----CAS1_MOUSE
      |   1   !
      |   !   +-----CAS1_RABIT
      |   !
      +-----CAS1_HUMAN
```

remember: this is an unrooted tree!

requires a total of 1061.000

```
((((CAS1_PIG,(CAS1_SHEEP,CAS1_BOVIN)),CAS1_MOUSE),CAS1_RABIT),
CAS1_HUMAN);
```

Maximum likelihood methods

There are two maximum likelihood programs for DNA data, and one for protein data. Dnaml uses a maximum likelihood method without molecular clock, and dnamlk assumes a molecular clock. Protml does not assume molecular clock.

DNA data

The menu of the dnaml:

Nucleic acid sequence Maximum Likelihood method, version 3.61

Settings for this run:

U	Search for best tree?	Yes
T	Transition/transversion ratio:	2.0000
F	Use empirical base frequencies?	Yes
C	One category of sites?	Yes
R	Rate variation among sites?	constant rate
W	Sites weighted?	No
S	Speedier but rougher analysis?	Yes
G	Global rearrangements?	No
J	Randomize input order of sequences?	No. Use input order
O	Outgroup root?	No, use as outgroup species 1
M	Analyze multiple data sets?	No
I	Input sequences interleaved?	Yes
0	Terminal type (IBM PC, ANSI, none)?	IBM PC
1	Print out the data at start of run	No
2	Print indications of progress of run	Yes
3	Print out tree	Yes
4	Write out trees onto tree file?	Yes
5	Reconstruct hypothetical sequences?	No

Y to accept these or type the letter for one to change

Most of the options has already been covered in the chapters above. However, there two new option, "s" and "g" with which you can modify the search parameters a bit.

“The option "s" turns on or off the search method which iterates or does not iterate the branch lengths in all topologies. Turning this option off ("No, not rough") will cause the program to run more slowly, but it will also be a bit more likely to find the tree topology of highest likelihood.” (Felsenstein, PHYLIP documentation)

“The "g" (global search) option causes, after the last species is added to the tree, each possible group to be removed and re-added. This improves the result, since the position of every species is reconsidered. It approximately triples the run-time of the program. This equivalent to the rearrangements done in parsimony program dnapars. Specifically, the program uses SPR (sub-tree pruning and regrafting) method for rearranging (or as others say, swapping) the trees.” (Felsenstein, PHYLIP documentation)

“If more than one category is specified, then another option, "a", becomes visible in the menu. This allows us to specify that we want to assume that sites that have the same regional rate category are expected to be clustered so that there is autocorrelation of rates. The program asks for the value of the average patch length. This is an expected length of patches that have the same rate. If it is 1, the rates of successive sites will be independent. If it is, say, 10.25, then the chance of change to a new rate will be 1 / 10.25 after every site. However the "new rate" is randomly drawn from the mix of rates, and hence could even be the same. So the actual observed length of patches with the same rate will be a bit larger than 10.25. Note below that if you choose multiple patches, there will be an estimate in the output file as to which combination of rate categories contributed most to the likelihood.” (Felsenstein, PHYLIP documentation)

The menu of the dnamlk:

Nucleic acid sequence

Maximum Likelihood method with molecular clock, version 3.61

Settings for this run:

U	Search for best tree?	Yes
T	Transition/transversion ratio:	2.0
F	Use empirical base frequencies?	Yes
C	One category of substitution rates?	Yes
R	Rate variation among sites?	constant rate
G	Global rearrangements?	No
W	Sites weighted?	No
J	Randomize input order of sequences?	No. Use input order
M	Analyze multiple data sets?	No
I	Input sequences interleaved?	Yes
0	Terminal type (IBM PC, ANSI, none)?	IBM PC
1	Print out the data at start of run	No
2	Print indications of progress of run	Yes
3	Print out tree	Yes
4	Write out trees onto tree file?	Yes
5	Reconstruct hypothetical sequences?	No

Are these settings correct? (type Y or the letter for one to change)

The "outfile" of the dnaml is quite similar to the outfile of dnamlk. The first is the "outfile" from dnaml analysis, and the latter is the same file from dnamlk.

Nucleic acid sequence Maximum Likelihood method, version 3.6

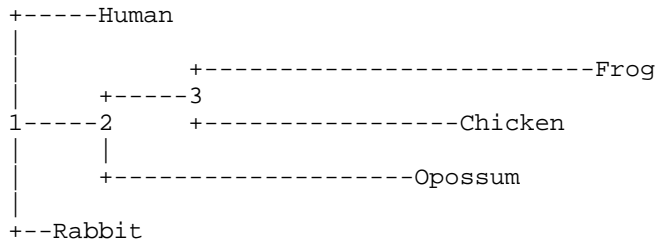
Empirical Base Frequencies:

```

A      0.25650
C      0.21951
G      0.22091
T(U)   0.30309

```

Transition/transversion ratio = 2.000000



remember: this is an unrooted tree!

Ln Likelihood = -9695.14457

Between	And	Length	Approx. Confidence Limits		
-----	---	-----	-----	-----	-----
1	Rabbit	0.09743	(0.06975,	0.12511)	**
1	Human	0.20090	(0.16716,	0.23474)	**
1	2	0.18632	(0.12823,	0.24451)	**
2	3	0.19152	(0.11910,	0.26384)	**
3	Frog	0.90555	(0.78325,	1.02776)	**
3	Chicken	0.58309	(0.49455,	0.67166)	**
2	Opossum	0.69201	(0.60518,	0.77894)	**

* = significantly positive, P < 0.05

** = significantly positive, P < 0.01

Nucleic acid sequence

Maximum Likelihood method with molecular clock, version 3.6

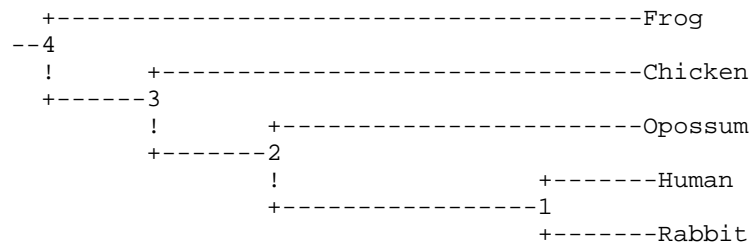
Empirical Base Frequencies:

```

A      0.25650
C      0.21951
G      0.22091
T(U)   0.30309

```

Transition/transversion ratio = 2.000000



```

Ln Likelihood = -9714.14764
Ancestor      Node      Node Height      Length
-----
root          4
4             Frog       0.77626          0.77626
4             3          0.13842          0.13842
3             Chicken    0.77626          0.63785
3             2          0.27815          0.13973
2             Opossum    0.77626          0.49812
2             1          0.62602          0.34787
1             Human      0.77626          0.15025
1             Rabbit     0.77626          0.15025

```

As you can see, dnaml produces the confidence intervals of the branch lengths of the tree, but dnamlk doesn't. Dnaml also produces a rough estimate of the p-value that the length of the branch is significantly greater than zero. This test is done by comparing the tree with the inferred branch length to a tree where the same branch has been scaled to be zero. This result is only an approximation, so do not rely on it when interpreting the results.

The reported likelihood (Ln Likelihood) is actually a natural logarithm of the likelihood. The closer the likelihood value is to zero, the better. It can be used for statistical testing of the hypothesis, as will be discussed in the advanced analysis chapter.

The "outtree" from both programs is identical in its form:

```

(Human:0.20090,((Frog:0.90555,Chicken:0.58309):0.19152,
Opossum:0.69201):0.18632,Rabbit:0.09743);

```

Protein data

The startup menu of the program proml is similar to dnaml:

Amino acid sequence Maximum Likelihood method, version 3.61

Settings for this run:

```

U          Search for best tree?  Yes
P      JTT, PMB or PAM probability model?  Jones-Taylor-Thornton
C          One category of sites?  Yes
R          Rate variation among sites?  constant rate of change
W          Sites weighted?  No
S      Speedier but rougher analysis?  Yes
G          Global rearrangements?  No
J      Randomize input order of sequences?  No. Use input order
O          Outgroup root?  No, use as outgroup species  1
M          Analyze multiple data sets?  No
I          Input sequences interleaved?  Yes
0      Terminal type (IBM PC, ANSI, none)?  IBM PC
1      Print out the data at start of run  No
2      Print indications of progress of run  Yes
3          Print out tree  Yes
4          Write out trees onto tree file?  Yes
5      Reconstruct hypothetical sequences?  No

```

Y to accept these or type the letter for one to change

The program proml assumes no molecular clock, and produces output files which are identical to the output files of the dnaml.

Resampling procedure

Idea behind resampling (bootstrapping and other methods) is to assess how reliable a tree we can produce with the dataset at hand. Initially, the sequence alignment is analyzed the usual way. Then, resampling proceeds (see the flow chart in the end of this book, also) by first creating a number (100-10000) of random dataset from the original dataset. These random datasets are analyzed exactly the same way the original dataset was analyzed, and the results from the random datasets are summarized using a majority rule consensus tree (program *consense*). Resampling with replacement (bootstrapping) can be done with the program *seqboot*:

Bootstrapping algorithm, version 3.61

Settings for this run:

D	Sequence, Morph, Rest., Gene Freqs?	Molecular sequences
J	Bootstrap, Jackknife, Permute, Rewrite?	Bootstrap
%	Regular or altered sampling fraction?	regular
B	Block size for block-bootstrapping?	1 (regular bootstrap)
R	How many replicates?	100
W	Read weights of characters?	No
C	Read categories of sites?	No
S	Write out data sets or just weights?	Data sets
I	Input sequences interleaved?	Yes
0	Terminal type (IBM PC, ANSI, none)?	IBM PC
1	Print out the data at start of run	No
2	Print indications of progress of run	Yes

Y to accept these or type the letter for one to change

You have several options to choose from. First, there are three resampling procedures available in the *seqboot* program (option "j"). Bootstrapping creates (with block size=1, option "b") new data sets, which are of equal length compared to the original sequence alignment. In bootstrapping resamples, every sequence site can occur in the same random alignment many times. Jackknife deletes a random 50% of sites from the original alignment, and none of the sites can occur in the resamples more than once. Permutation produces data matrices that have the same number and kinds of characters but no taxonomic structure. It is used for different purposes than the bootstrap, as it tests not the variation around an estimated tree but the hypothesis that there is no taxonomic structure in the data: if a statistic such as number of steps is significantly smaller in the actual data than it is in replicates that are permuted, then we can argue that there is some taxonomic structure in the data (though perhaps it might be just a pair of sibling species). The program also converts Phylip-formatted data into other formats (Nexus and XML) using the "rewrite" selection (option J).

With option "r" sets the number of new random data matrixes produced.

You can also use weights with the bootstrapping procedure (option "w"). If you want to save the hard disk space, you can generate, instead of new dataset, a file containing weights. These weights can then be used in the same way as the new bootstrapped dataset. Only, instead of using multiple dataset in the analysis program, you need to use the weights.

After accepting the settings, *seqboot* asks for a random number. Pick an odd random number. Just keep in mind that using the same random number produces always exactly the same result. If you need to run bootstrapping several times, change the random number between the runs.

Accepting the settings produces a file where there are 100 random samples:

```

6 333
CAS1_MOUSE KLCIAAAMR RHHSNNNN VSSSSQQQQ QHHSSE--- -----II IFQQPKYYL
CAS1_RABIT KLCITTAALRK KHHLL---- HLLKLLQOE QPPSSQEEI ILLKKERLRR RFQQTVPPL
CAS1_PIG KFCLVVALRK KPPPL---- HQQEHHQON EPPSRELLF FKKEERKRF FPVPLLLS
CAS1_HUMAN RLCLVVALRK KPPPL---- YPPERRQON PPSSS----- ----PIPPL
CAS1_SHEEP KLCVVALRK KPPPII---- HQQGLLP- -----EVVL LNNEEN-RFF FVAAPFPPE
CAS1_BOVIN KLCVVALRK KPPPII---- HQQGLLPQ- -----EVVL LNNEEN-RFF FFAAPFPPE

6 333
CAS1_HUMAN MRRLLLLLCL AAARPKPLL RYPPRRRLQN PESSSE---- ----- --PPPPLEE
CAS1_SHEEP MKKLLLLLCL AAARPKPII KHQQQLLSP- -----EEVN N-LLRFFVVV VVPPPPPEV
CAS1_MOUSE MKKLLLLLCL AAAMRRHSS RVSSSQQTQQ QSSSSEEE-- -----IIFK KKPPYYLNN
CAS1_PIG MKKLLLLFCL AAARPKPLL RHQQQHHLQON EDSRREELR RKFFRFFPPE EEPPLLSQ
CAS1_RABIT MKKLLLLLCL AAARHKHLL GHLLLLLTQE QESSEQQEE ERKKLRRFFV VVTTPPLEE
CAS1_BOVIN MKKLLLLLCL AAARPKPII KHQQQLLPQ- -----EEVN N-LLRFFFFV VVPPPPPEV etc.

```

Then we proceed with this file as if it was the original sequence alignment. In our case, let's produce distance trees with the program protdist.

Protein distance algorithm, version 3.61

Settings for this run:

```

P Use JTT, PMB, PAM, Kimura, categories model? Jones-Taylor-Thornton
G Gamma distribution of rates among positions? No
C One category of substitution rates? Yes
W Use weights for positions? No
M Analyze multiple data sets? No
I Input sequences interleaved? Yes
0 Terminal type (IBM PC, ANSI)? IBM PC
1 Print out the data at start of run No
2 Print indications of progress of run Yes

```

Are these settings correct? (type Y or the letter for one to change)

m

How many data sets?

100

We have to tell the program that there are multiple datasets in the same file by changing the option "m". Then the distance matrix is calculated for all the 100 random samples. The outfile produced contains all these distance matrixes:

```

6
CAS1_MOUSE 0.00000 0.80622 1.46041 1.14997 2.11928 1.98883
CAS1_RABIT 0.80622 0.00000 1.35772 0.82152 1.76401 1.49899
CAS1_PIG 1.46041 1.35772 0.00000 1.30075 0.61110 0.58505
CAS1_HUMAN 1.14997 0.82152 1.30075 0.00000 1.72499 1.56997
CAS1_SHEEP 2.11928 1.76401 0.61110 1.72499 0.00000 0.08268
CAS1_BOVIN 1.98883 1.49899 0.58505 1.56997 0.08268 0.00000

6
CAS1_HUMAN 0.00000 2.03032 1.01938 1.27690 0.69497 1.95053
CAS1_SHEEP 2.03032 0.00000 2.15271 0.71847 1.79089 0.16285
CAS1_MOUSE 1.01938 2.15271 0.00000 1.47633 0.90248 1.87560
CAS1_PIG 1.27690 0.71847 1.47633 0.00000 1.52777 0.77397
CAS1_RABIT 0.69497 1.79089 0.90248 1.52777 0.00000 1.54938
CAS1_BOVIN 1.95053 0.16285 1.87560 0.77397 1.54938 0.00000

```

[And so forth]

This distance matrix is then used for tree drawing with the original method, *i.e.*, if the original data was analysed with F84-distance and neighbor-joining, the bootstrapping analysis has to be performed with the same settings.

Again, in the program neighbor the multiple datasets option (m) has to be chosen. The resulting outtree contains trees for all the 100 random datasets.

```
((CAS1_PIG:0.09668,(CAS1_SHEEP:0.11341,CAS1_BOVIN:-0.03073):0.46006):0.75811,
CAS1_HUMAN:0.41697,(CAS1_MOUSE:0.55088,CAS1_RABIT:0.25534):0.16567);

(((CAS1_SHEEP:0.14929,CAS1_BOVIN:0.01356):0.52397,CAS1_PIG:0.14082):0.82720,
CAS1_MOUSE:0.54493,(CAS1_HUMAN:0.38539,CAS1_RABIT:0.30958):0.06851);

[And so forth]
```

These dataset are then combined in a consensus tree with the program `consense`.

Consensus tree program, version 3.61

Settings for this run:

```
C      Consensus type (MRe, strict, MR, M1):  Majority rule (extended)
O              Outgroup root:  No, use as outgroup species 1
R              Trees to be treated as Rooted:  No
T      Terminal type (IBM PC, ANSI, none):  IBM PC
1      Print out the sets of species:  Yes
2      Print indications of progress of run:  Yes
3              Print out tree:  Yes
4              Write out trees onto tree file:  Yes
```

Are these settings correct? (type Y or the letter for one to change)

There are four consensus tree types to choose from. Strict consensus creates a tree which only includes the set of sequences, if it occurs in all the trees. The MR, MRe and M1 all produce a majority rule trees with slightly different options. The default method (MRe) will include into the new tree all the groups of sequences, which are present in more than 50% of the trees. M1 lets you to specify the percentage. Note, that the consensus tree from bootstrapping samples should always be drawn with majority rule method.

The "outfile" and "outtree" contain the information of how many times the set of species was find to be together in the random samples. If this value is under, say 70-95%, the result should be interpreted with caution. This also implies that there probably is not enough data to differentiate between the species, which have a low bootstrapping value.

Majority-rule and strict consensus tree program, version 3.61

Species in order:

```
CAS1 PIG
CAS1 SHEEP
CAS1 BOVIN
CAS1 HUMAN
CAS1 MOUSE
CAS1 RABIT
```

Sets included in the consensus tree

```
Set (species in order)      How many times out of 100.00
```

```

...***      100.00
.**...      100.00
....**      77.00

```

Sets NOT included in consensus tree:

Set (species in order) How many times out of 100.00

```

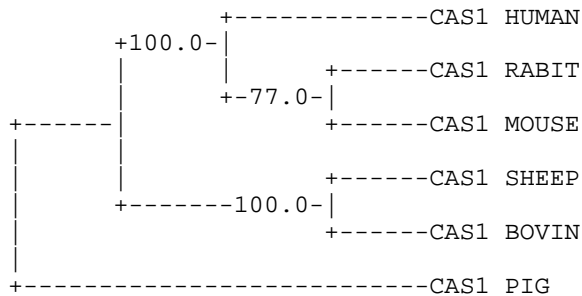
...*. *      16.00
...**.      7.00

```

Extended majority rule consensus tree

CONSENSUS TREE:

the numbers at the forks indicate the number of times the group consisting of the species which are to the right of that fork occurred among the trees, out of 100.00 trees



remember: this is an unrooted tree!

The concomittant “outtree” contains the same information. The bootstrapping values are reported in the place of branch lenghts.

```

(((CAS1_HUMAN:100.0,(CAS1_RABIT:100.0,CAS1_MOUSE:100.0):77.0):100.0,(CAS1_S
HEEP:100.0,CAS1_BOVIN:100.0):100.0):100.0,CAS1_PIG:100.0);

```

The bootstrapping procedure implemented in Phylip does not perform the analysis on the original tree. Instead, Felsenstein has argued that the most reasonable tree would be the one recovered from the random samples as described above. However, the original inferred tree and the tree produced by bootstrapping are usually pretty similar.

Drawing the tree

We can draw an unrooted tree from the information contained in the file "outtree" with the program drawgram.

```
Drawgram: can't find input tree file "intree"
Please enter a new file name> plottree
DRAWGRAM from PHYLIP version 3.6
Reading tree ...
Tree has been read.
Loading the font ....
Drawgram: can't find font file "fontfile"
Please enter a new file name> font1
Font loaded.
```

Rooted tree plotting program version 3.61

Here are the settings:

```
0  Screen type (IBM PC, ANSI):  IBM PC
P      Final plotting device:  Postscript printer
V      Previewing device:  MS Windows display
H      Tree grows:  Horizontally
S      Tree style:  Phenogram
B      Use branch lengths:  Yes
L      Angle of labels:  90.0
R      Scale of branch length:  Automatically rescaled
D      Depth/Breadth of tree:  0.53
T      Stem-length/tree-depth:  0.05
C      Character ht / tip space:  0.3333
A      Ancestral nodes:  Weighted
F      Font:  Times-Roman
M      Horizontal margins:  1.65 cm
M      Vertical margins:  2.16 cm
#      Pages per tree:  one page per tree
```

Y to accept these or type the letter for one to change

First, we want to be able to view the file easily in Windows, and we change the Final plotting device by typing "p" and Return.

A new menu opens:

Which plotter or printer will the tree be drawn on?
(many other brands or models are compatible with these)

```
type:          to choose one compatible with:

L              Postscript printer file format
M              PICT format (for drawing programs)
J              HP Laserjet PCL file format
W              MS-Windows Bitmap
F              FIG 2.0 drawing program format
A              Idraw drawing program format
Z              VRML Virtual Reality Markup Language file
P              PCX file format (for drawing programs)
K              TeKtronix 4010 graphics terminal
X              X Bitmap format
V              POVRAY 3D rendering program file
R              Rayshade 3D rendering program file
H              Hewlett-Packard pen plotter (HPGL file format)
D              DEC ReGIS graphics (VT240 terminal)
E              Epson MX-80 dot-matrix printer
C              Prowriter/Imagewriter dot-matrix printer
T              Toshiba 24-pin dot-matrix printer
O              Okidata dot-matrix printer
B              Houston Instruments plotter
U              other: one you have inserted code for
```

Choose one:

From which we will choose MS-Windows Bitmap by typing "w" and Return. The program then asks the desired resolution of the picture (on the next page). After specifying that, you'll be dropped back to the main menu.

```
Please select the MS-Windows bitmap file resolution
X resolution?
640
Y resolution?
400
```

After accepting the settings by typing in "y" and Return, a new window opens. In this window you can preview the tree, and if it looks good, plot it into file by selecting from File-menu option plot. The tree is plotted in the "plotfile". The options of the program drawtree are similar, but the program produces a rooted tree.

Advanced topics

Here some more advanced analysis options are considered. These options are seldom used by researchers, because they do not know about these possibilities.

User trees

User trees have multiple purposes. They can be used for transition/transversion ratio approximation, likelihood comparisons (statistical comparisons of the trees), etc. These purposes will be covered in the succeeding sections.

User trees should be in a plain text file named "intree". Some program do not read the branch lengths or the number of the trees, so this needs a little experimentation. However, the basic form of the "intree" file is:

```
(Frog,(Chicken,(Opossum,(Human,Rabbit))));
```

The easiest way to produce user-trees is to perform an analysis with some of the programs, and then modify the file outtree with the program retree or by some text editor.

Program retree

Retree reads in a treefile, which is in Newick format. For example, a tree produced with dnaml can be directly imported into retree. In this example we modify the tree:

```
((Frog:0.34762,Chicken:0.30447):0.15014,Opossum:0.29127);
```

when the program starts, you get a menu:

Tree Rearrangement, version 3.61

Settings for this run:

```
U      Initial tree (arbitrary, user, specify)?  User tree
N Format to write out trees (PHYLIP, Nexus, XML)?  PHYLIP
O      Graphics type (IBM PC, ANSI)?  (none)
W      Width of terminal screen, of plotting area?  80, 80
L      Number of lines on screen?  24
```

Are these settings correct? (type Y or the letter for one to change)

After you have confirmed these setting, a new view opens:

```

                                     ,-----1:Frog
                                     |
                                     |-----8
      ,-----7
      |
2:Chicken  !
      |      !
      |      !-----3:Opossum
      |
--6-----4:Human
      |
      |-----5:Rabbit
```

NEXT? (Options: R . = U W O M T F D B N H J K L C + ? X Q) (? for Help)

The options of the program can be printed on the screen by typing "?" and Return:

```

. Redisplay the same tree again
= Redisplay the same tree without/with lengths
U Undo the most recent change in the tree
W Write tree to a file
+ Read next tree from file (may blow up if none is there)
R Rearrange a tree by moving a node or group
O select an Outgroup for the tree
M Midpoint root the tree
T Transpose immediate branches at a node
F Flip (rotate) subtree at a node
D Delete or restore nodes
B Change or specify the length of a branch
N Change or specify the name(s) of tip(s)
H Move viewing window to the left
J Move viewing window downward
K Move viewing window upward
L Move viewing window to the right
C show only one Clade (subtree) (might be useful if tree is too big)
? Help (this screen)
Q (Quit) Exit from program
X Exit from program

```

TO CONTINUE, PRESS ON THE Return OR Enter KEY

Now you can reroot the tree, swap the branches, etc. In this case, we want to remove branch lengths from all the branches of the tree. This can be done by invoking the option "b":

```

NEXT? (Options: R . = U W O M T F D B N H J K L C + ? X Q)(? for Help) b
Specify length of which branch (0 = all branches)? 0

```

(this operation cannot be undone)

```

    enter U to leave the lengths unchanged
OR enter R to remove the lengths from all branches:
r

```

```

      ,-----1:Frog
    ,-----7
    !      ! ,--2:Human
    !      `--8
    !      `--3:Opossum
    !
--6-----4:Chicken
    !
    `-----5:Rabbit

```

Next we want to save the tree and quit the program:

```

NEXT? (Options: R . U W O T F D B N H J K L C + ? X Q) (? for Help) x
Do you want to write out the tree to a file? (Y or N) y
retree: the file "outtree" that you wanted to
        use as output tree file already exists.
        Do you want to Replace it, Append to it,
        write to a new File, or Quit?
        (please type R, A, F, or Q)
r

```

```

Enter R if the tree is to be rooted
OR enter U if the tree is to be unrooted: u

```

```

Tree written to file
(((Frog,Chicken),Opossum),Human,Rabbit);

```

Estimating transition/transversion ratio

Estimating the transition/transversion ratio is pretty easy with the program dnaps. A parsimony tree with transversion parsimony turned off (default) is first calculated. From the outfile, note the number of changes required for the tree (in this case, 3019).

From the outtree, construct a treefile ("intree") which contains the inferred tree without branch lengths (for help, see above). Remember to add a line specifying the number of trees in the file.

Run the dnaps with exactly the same settings as previously, except give it an intree, which we just produced, and use the transversion parsimony. Note the number of changes from the outfile (in this case, 2091).

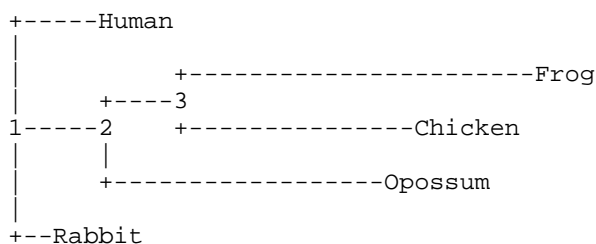
From these values, the transition/transversion ratio can be estimated: $3019 / 2091 = 1.44$. You can then use this value in more detailed analyses, e.g. maximum likelihood, etc. However, the estimated ratio seems to depend on the specified outgroup. So, if you have information about the outgroup you are planning to use in the forthcoming analysis, you should use it in this estimation process too.

Another way to estimate the transition/transversion ratio is to run maximum likelihood program dnaml multiple times, and try to find the value, which minimizes the likelihood value. If you use this procedure, you can usually get quite similar results as with the aforementioned parsimony method.

The maximum likelihood method works this way (* = initial value from parsimony analysis):

s/t-ratio	likelihood	s/t-ratio	likelihood
1.44	-9652.96081*	1.00	-9643.20009
1.25	-9644.49078	0.95	-9644.9407
1.15	-9642.29536	0.90	-9647.57138
1.10	-9641.96561	0.85	-9651.21944
1.05	-9642.23988		

If the tree is then inferred with the s/t-ratio inferred by parsimony and maximum likelihood, the tree looks identical in our case, but the branch lengths vary a bit:



[parsimony estimation]
remember: this is an unrooted tree!

Ln Likelihood = -9652.96081

Between -----	And ---	Length -----	Approx. Confidence Limits -----	
1	Rabbit	0.09923	(0.07218,	0.12617) **
1	Human	0.19303	(0.16064,	0.22542) **
1	2	0.18455	(0.13216,	0.23698) **
2	3	0.15719	(0.09442,	0.21997) **
3	Frog	0.80197	(0.70133,	0.90253) **
3	Chicken	0.53674	(0.46077,	0.61276) **
2	Opossum	0.61599	(0.54185,	0.69013) **

* = significantly positive, $P < 0.05$

** = significantly positive, $P < 0.01$

[maximum likelihood estimation]

Ln Likelihood = -9641.96561

Between -----	And ---	Length -----	Approx. Confidence Limits -----	
1	Rabbit	0.10097	(0.07432,	0.12755) **
1	Human	0.18761	(0.15605,	0.21917) **
1	2	0.18557	(0.13596,	0.23522) **
2	3	0.13641	(0.07800,	0.19475) **
3	Frog	0.75496	(0.66344,	0.84638) **
3	Chicken	0.51613	(0.44578,	0.58657) **
2	Opossum	0.57699	(0.50869,	0.64529) **

* = significantly positive, $P < 0.05$

** = significantly positive, $P < 0.01$

The procedure outlined above can be quite slow, and a good compromise for estimating the transition/transversion ratio is to acquire a good tree and then estimate the parameters using the tree. In practice, this can be done using a user tree in program dnaml and letting the program to re-estimate the branch lengths. Dnaml will then simultaneously optimize the transition/transversion ratio, also. Even faster would be to use the user tree but not allow dnaml to re-estimate the branch lengths.

Estimating base frequencies

Above, a maximum likelihood method for estimating transition/transversion ratio is presented. A similar method can be used for inferring the maximum likelihood estimators of base frequencies.

Empirical frequencies are:

```
A      0.25650
C      0.21951
G      0.22091
T(U)   0.30309
```

We can start the estimation by option "f", which then prompts for base frequencies. The frequency values should be separated by blanks:

```
Base frequencies for A, C, G, T/U (use blanks to separate)?
0.25 0.22 0.22 0.31
```

Note the likelihood of the old (-9695.14457) and new (-9696.03008) analysis. In this example, the likelihood got lower after modifying the base frequencies. This indicates that

the empirical frequencies were better. This procedure can be repeated a number of times in order to get the best estimate.

Testing molecular clock

The molecular clock assumption can be crudely tested by the two maximum likelihood programs, dnaml and dnamlk. The test, which compares two likelihoods is called likelihood ratio test.

First the analysis is run by program dnamlk, which produces an unrooted tree with molecular clock assumption:

```
(Frog:0.77626,(Chicken:0.63785,(Opossum:0.49812,(Human:0.15025,
Rabbit:0.15025):0.34787):0.13973):0.13842);
```

Note the probability of the tree: -9714.14764.

The program dnaml can readily read in this treefile, which has first to be named "intree". Remember to run the analysis with the user tree option ("u") turned on. You should also run the analysis without using the lengths on the user tree.

Note the probability of tree from the dnaml analysis: -9695.14457

Now calculate the difference between probabilities: $2 * (-9714.14764 + 9695.14457) = 38.006$. This difference is then compared to the chi-square distribution with df (degrees of freedom) equal to the number of sequences. The table consists of dfs on the left side, and p-values on the upper side. The values in the crossing of the p-value and df is called the critical value of the distribution. P-value is the risk that we conclude by chance that sequences did not evolve according to a clock. Often the p-value is set to be 0.05.

If the difference is larger than the critical value mentioned in the table below, the sequences did not evolve according to a molecular clock.

In our case, the difference was 38.006. That is larger than the critical value with df=5 and p-value=0.05, which is 11.070. Thus, we conclude that we can reject the clock hypothesis, but by chance we might do that in 1 / 20 cases if the same analysis was repeated (p-value of 0.05).

df	Probability of exceeding the critical value				
	0.10	0.05	0.025	0.01	0.001
1	2.706	3.841	5.024	6.635	10.828
2	4.605	5.991	7.378	9.210	13.816
3	6.251	7.815	9.348	11.345	16.266
4	7.779	9.488	11.143	13.277	18.467
5	9.236	11.070	12.833	15.086	20.515
6	10.645	12.592	14.449	16.812	22.458
7	12.017	14.067	16.013	18.475	24.322
8	13.362	15.507	17.535	20.090	26.125
9	14.684	16.919	19.023	21.666	27.877
10	15.987	18.307	20.483	23.209	29.588

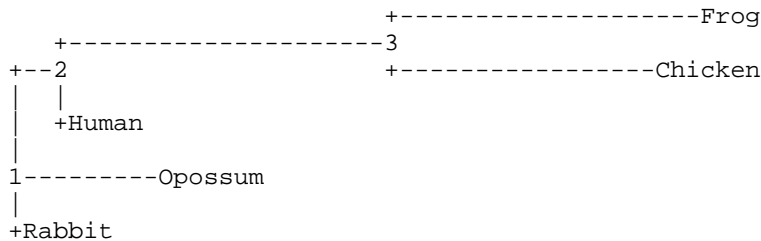
Inferring ancient states of sequence sites

Why are we interested in reconstructing ancestral character states? It can provide important information about adaptive radiations and key innovations for these radiations. One interesting approach has been to use the ancient sequences to produce an ancient protein. Then the biochemical properties of this protein could be studied and compared to the modern proteins.

The ancestral states of sequence sites can be inferred either by parsimony or by maximum likelihood. It is often thought, that the maximum likelihood method is more accurate than the parsimony method for inferring ancient sequences.

The ancestral states are inferred in both programs dnapars and dnaml by turning on the option "5", print sequences at all nodes of tree and reconstruct hypothetical sequences, respectively.

Tree is identical for both methods



[maximum likelihood method]

Probable sequences at interior nodes:

node	Reconstructed sequence (caps if > 0.95)					
1	GTTCAGGACT	TGGGCATAAA	AGGCAGAGCA	GGGCcAGCTG	CTGCTTACAC	
2	agcCAGGgCT	tGGGCATAAA	AGtCAGgGCA	GaGCcAtCTa	tTGCTTACAt	
3	rrcrrrcyrcy	rscacrrgyr	ygyrcrcrcr	rrgyyakcrr	yygyycarry	
Frog	CTCAACTTTG	GCCATGGGTT	TGACAGCACA	TGATCGTCAG	CTGATCAACA	
Chicken	GACGGCCGCT	rrCACCAGCG	TGCTATCCCC	ACGGGAGCAA	GAGCCCAGAC	
Human	AGCCAGGGCT	rGGGCATAAA	AGTCAGGGCA	GAGCCATCTA	TTGCTTACAT	
Opossum	GTTTGGGGGC	CAGGGATAAA	AGGCAGAGCT	AGATTAGTTT	CAGCATCATA	
Rabbit	GTTCAGGACT	TGGGCATAAA	AGGCAGAGCA	GGGCrAGCTG	CTGCTTACAC	

Maximum likelihood method writes the sequence sites with over 95% probability with upper case, sites with 50-95% probability with lower case, and those with less than 50% probability with an ambiguity code.

[parsimony method]

From	To	Any Steps?	State at upper node			
	1		GTTCAGGGCT	?GGGCATAAA	AGGCAGAGCA	RGGY?AGCTD
1	2	yes	GTCCAGGGCT	-GGGCATAAA	AGNCAGVGCA	RGGYCAKCTR
2	3	yes	GTCVACBGCT	-?CACVDGHD	TGNCAGCVCA	DGGBCAKCAR
3	Frog	yes	CTCAACTTTG	GCCATGGGTT	TGACAGCACA	TGATCGTCAG
3	Chicken	yes	GACGGCCGCT	--CACCAGCG	TGCTATCCCC	ACGGGAGCAA
2	Human	yes	AGCCAGGGCT	-GGGCATAAA	AGTCAGGGCA	GAGCCATCTA
1	Opossum	yes	GTTTGGGGGC	CAGGGATAAA	AGGCAGAGCT	AGATTAGTTT
1	Rabbit	yes	GTTCAGGACT	TGGGCATAAA	AGGCAGAGCA	GGGC-AGCTG

	1		CTGCTTAMAM
1	2	no	CTGCTTAMAM
2	3	yes	CTGCTCAVAM
3	Frog	yes	CTGATCAACA
3	Chicken	yes	GAGCCCAGAC
2	Human	yes	TTGCTTACAT
1	Opossum	yes	CAGCATCATA
1	Rabbit	maybe	CTGCTTACAC

If the parsimony inferred state is "?" or an ambiguity code, there are multiple equally parsimonious states; the user has to work these out by hand. In addition, "?" means that a deletion might or might not have happened.

Statistical tests of trees

Statistical tests can be performed for both parsimony and maximum likelihood trees. The tests are performed by putting multiple trees in the "intree" file. Actually, the tests are automatically performed, if there are multiple trees in the "intree" file:

```
(( (Frog,Chicken),Human),Opossum,Rabbit);
(( (Frog,Human),Chicken),Opossum,Rabbit);
(( (Frog,Opossum),Human),Chicken,Rabbit);
(( (Frog,Chicken),Rabbit),Opossum,Human);
(( (Frog,Rabbit),Human),Opossum,Chicken);
```

“Parsimony program dnaps performs a modified Templeton test. It is closely parallel to a test using log likelihood differences, and uses the mean and variance of step differences between trees, taken across sites. If the mean is more than 1.96 standard deviations different then the trees are declared significantly different. The program prints out a table of the steps for each tree, the differences of each from the best one, the variance of that quantity as determined by the step differences at individual sites, and a conclusion as to whether that tree is or is not significantly worse than the best one.” (Felsenstein, PHYLIP documentation)

This test finds the best tree among the competing hypothesis. However, the results are not corrected for multiple comparisons, and the results need still to be interpreted with caution.

Tree	Steps	Diff	Steps	Its S.D.	Significantly worse?
1	3134.0		38.0	18.2807	Yes
2	3194.0		98.0	15.3665	Yes
3	3096.0	<-----	best		
4	3107.0		11.0	18.3081	No
5	3124.0		28.0	18.5524	No

Maximum likelihood programs perform a Kishino-Hasegawa test. “If the "u" (User Tree) option is used and more than one tree is supplied, and the program is not told to assume autocorrelation between the rates at different sites, the program also performs a statistical test of each of these trees against the one with highest likelihood. This test uses the mean and variance of log-likelihood differences between trees, taken across sites. If the mean is more than 1.96 standard deviations different then the trees are declared significantly different. This use of the empirical variance of log-likelihood differences is more robust and nonparametric than the classical likelihood ratio test, and may to some extent compensate for the any lack of realism in the model underlying this program. The program prints out a table of the log-likelihoods of each tree, the differences of each from the highest one, the variance of that

quantity as determined by the log-likelihood differences at individual sites, and a conclusion as to whether that tree is or is not significantly worse than the best one. However the Kishino-Hasegawa-Templeton test is not available if we assume that there is autocorrelation of rates at neighboring sites (option A) and is not done in those cases.” (Felsenstein, PHYLIP documentation)

Tree	Ln L	Diff Ln L	Its S.D.	Significantly worse?
1	-9711.73593	-0.49089	1.0214	No
2	-9738.53093	-27.28588	7.7202	Yes
3	-9730.79910	-19.55405	8.7519	Yes
4	-9711.24505	<----- best		
5	-9725.82664	-14.58159	9.4918	No

LogDet-distance

LogDet-distance has been developed to account for the base frequency differences between lineages. However, the LogDet-distance does not give a reliable tree, when there are large rate differences between sites in the sequence.

LogDet-distances would be usable when the base frequencies in different lineages are not constant. In these cases, LogDet distances often outperform maximum likelihood method.

How to test for base frequency heterogeneity? dnaml writes a short table about the empirical base frequencies in the current dataset. The downside is that these frequencies can not be computed for only two sequences. Here is an example of base frequencies calculated for three different sets of three taxa:

A	0.28378
C	0.19595
G	0.31081
T(U)	0.20946
A	0.27027
C	0.23649
G	0.27703
T(U)	0.21622
A	0.25850
C	0.29252
G	0.26531
T(U)	0.18367

There are some differences between lineages, but not too large (about 5%), and the usual distance method should do fine. However, this estimation approach fast becomes complicated when the number of sequences goes up. One limitation of the LogDet distance is that it may be infinite sometimes, if there are too many changes between certain pairs of nucleotides. This can be particularly noticeable with distances computed from bootstrapped sequences.

Computing topological distances between trees

“Topological distances can be computed with the program treedist. The Symmetric Distance is computed by considering each of the branches of the two trees. This does not use branch

length information, only the tree topologies. It must also be borne in mind that the distance does not have any immediate statistical interpretation -- we cannot say whether a larger distance is significantly larger than a smaller one.” (Felsenstein, PHYLIP documentation)

“Each branch divides the set of species into two groups -- the ones connected to one end of the branch and the ones connected to the other. This makes a partition of the full set of species. (in Newick notation)” (Felsenstein, PHYLIP documentation)

```
((A,C),(D,(B,E)))
```

“has two internal branches. One induces the partition $\{A, C \mid B, D, E\}$ and the other induces the partition $\{A, C, D \mid B, E\}$. A different tree with the same set of species,” (Felsenstein, PHYLIP documentation)

```
((A,D),C),(B,E))
```

“has internal branches that correspond to the two partitions $\{A, C, D \mid B, E\}$ and $\{A, D \mid B, C, E\}$. Note that the other branches, all of which are external branches, induce partitions that separate one species from all the others. Thus there are 5 partitions like this: $\{C \mid A, B, D, E\}$ on each of these trees. These are always present on all trees, provided that each tree has each species at the end of its own branch.” (Felsenstein, PHYLIP documentation)

“The Symmetric Distance is simply a count of how many partitions there are, among the two trees, that are on one tree and not on the other. In the example above there are two partitions, $\{A, C \mid B, D, E\}$ and $\{A, D \mid B, C, E\}$, each of which is present on only one of the two trees. The Symmetric Distance between the two trees is therefore 2. When the two trees are fully resolved bifurcating trees, their symmetric distance must be an even number; it can range from 0 to twice the number of internal branches, which for n species is $4n-6$.” (Felsenstein, PHYLIP documentation)

The input file is a standard "intree":

```
((Frog,Chicken),Human),Opossum,Rabbit);
((Frog,Human),Chicken),Opossum,Rabbit);

((Frog,Chicken),Human),Opossum,Rabbit);
((Frog,Opossum),Human),Chicken,Rabbit);

((Frog,Chicken),Human),Opossum,Rabbit);
((Frog,Chicken),Rabbit),Opossum,Human);

((Frog,Chicken),Human),Opossum,Rabbit);
((Frog,Rabbit),Human),Opossum,Chicken);
```

The treedist writes a menu:

Tree distance program, version 3.61

Settings for this run:

```
D          Distance Type:  Branch Score Distance
O          Outgroup root:  No, use as outgroup species  1
R          Trees to be treated as Rooted:  No
T          Terminal type (IBM PC, ANSI, none):  IBM PC
1  Print indications of progress of run:  Yes
2          Tree distance submenu:  Distance between adjacent pairs
```

Are these settings correct? (type Y or the letter for one to change)

Invoking the option "2" let's you to specify which way the trees are compared:

Tree Pairing Submenu:

```
A  Distances between adjacent pairs in tree file.
P  Distances between all possible pairs in tree file.
C  Distances between corresponding pairs in one tree file and other.
L  Distances between all pairs in one tree file and another.
```

Choose one: (A,P,C,L)

The distances are calculated for pairs of trees by default:

Symmetric differences between adjacent pairs of trees:

```
Trees 1 and 2:  2
Trees 3 and 4:  4
Trees 5 and 6:  2
Trees 7 and 8:  4
```

Program treedist is handy when there are multiple trees, for example, equally parsimonious trees, and pair wise comparisons need to be made fast. As is obvious from the example above, the pair wise distance of two means one swapping of two terminal branches (two sequences). If we are interested in the taxonomical relationships between the taxa, this swapping does not affect the classification (because those two taxa still belong to the same clade). See the example below:

User trees:

```
(( (Frog,Chicken),Human),Opossum,Rabbit);
(( (Frog,Human),Chicken),Opossum,Rabbit);
(( (Frog,Opossum),Human),Chicken,Rabbit);
(( (Frog,Chicken),Rabbit),Opossum,Human);
(( (Frog,Rabbit),Human),Opossum,Chicken);
```

Pairwise distances:

	1	2	3	4	5
1	0	2	4	2	4
2	2	0	4	4	4
3	4	4	0	4	4
4	2	4	4	0	4
5	4	4	4	4	0

Templeton statistical test results:

Tree	Steps	Diff	Steps	Its S.D.	Significantly worse?
1	3134.0		38.0	18.2807	Yes
2	3194.0		98.0	15.3665	Yes
3	3096.0	<-----	best		
4	3107.0		11.0	18.3081	No
5	3124.0		28.0	18.5524	No

Compare the user trees 1 and 2. Their pair wise distance is 2, which is self-evident: Human and Chicken have switched their places. This does not affect the taxonomical relationships, if we assume that Frog, Chicken and Human form a monophyletic clade.

On the basis of Templeton test we can't really decide that the tree 3 is statistically significantly the best tree. Therefore we consider all the trees 3-5 as equally parsimonious hypothesis. In this kind of case, it would be wise to pick the tree with the shortest pair wise distance (preferably 2) from the competing trees. This is because, if the we make a taxonomic decision based on this selected tree (with a distance of 2), it would not change, if the true tree is in future find to be some other (not the selected) of the competing trees.

Weighting

Weights can be used to analyze different subsets of characters (by weighting the rest as zero). For example, it might be of interest to compare the trees inferred from the first, second and the third codon positions. This can be acquired by using the weights. The weights are saved in a file named "weights", and the file should contain a text string of weights for all the sequence sites. For example, the weight-pattern given below will use only the third codon position for inferring the tree.

```
001001001001001001001001001001001001001001001
```

Weights are also handy, if you want to analyze different parts of the sequences, for example, only conserved areas of the protein. You don't need to edit the original data files if you just create new weights.

You can also check for the uniformity of the substitution rates of different codon positions by using weights. Create three weight-files, where you specify to include only the first, second or the third codon positions in the analysis:

```
First positions: 100100100
Second positions: 010010010
Third positions: 001001001
```

These weight-specifications must be exactly as long as your sequence is. Otherwise you will get into trouble. Then run the program dnaps with the same material using the option "w" once with every weight-specifications, and note the number of changes:

```
All positions: 49 changes
First positions: 20 changes
Second positions: 12 changes
Third positions: 17 changes
```

It now becomes visible that there are different numbers of changes in different codon positions. It seems that the second position has much smaller number of changes than other positions. This is a reasonable assumption, because the substitutions in the second codon position more often lead to an amino acid change than substitutions in the first position.

In the example, the first and third codon position have nearly the same number of changes. It also reasonable to assume that the third codon position has more changes than the first, but this assumption was not supported by the data in our example.

Why should we check for the unequal rate of substitution in different positions? Because, if there are some evolutionary constraints for the substitutions, they would become visible this way. Another reason is to check for the saturation of the substitutions in different codon positions. If there are large differences between the number of changes, especially, if the number of substitutions in the third codon positions is high, the saturation is a likely explanation. In the case of saturation, the DNA sequence including the third position may give erroneous results, and it could be better to use protein sequences or the DNA sequence comprising of only the first and the second codon positions.

Note that the parsimony method mentioned above does not count all the possible positions. It only includes parsimony informative positions, and thus the estimated frequencies of changes in different positions might be misleading. However, this method can be used quite effectively with long sequence stretches.

Another method for testing for the sequence site rate heterogeneity is to calculate pairwise distances using the different codon sites (program dnadist):

First positions:

5					
Rabbit	0.0000	0.1578	1.4088	0.5954	0.8499
Human	0.1578	0.0000	0.8327	0.4690	4.2225
Opossum	1.4088	0.8327	0.0000	0.5029	5.9886
Chicken	0.5954	0.4690	0.5029	0.0000	3.3429
Frog	0.8499	4.2225	5.9886	3.3429	0.0000

Secon positions:

5					
Rabbit	0.0000	0.0754	0.2923	0.6328	0.8892
Human	0.0754	0.0000	0.1695	0.4178	0.6464
Opossum	0.2923	0.1695	0.0000	0.2996	0.7112
Chicken	0.6328	0.4178	0.2996	0.0000	0.6150
Frog	0.8892	0.6464	0.7112	0.6150	0.0000

Third positions:

5					
Rabbit	0.0000	0.4062	0.5623	0.8167	1.2231
Human	0.4062	0.0000	0.2666	0.4173	1.0609
Opossum	0.5623	0.2666	0.0000	0.1644	0.8987
Chicken	0.8167	0.4173	0.1644	0.0000	1.3639
Frog	1.2231	1.0609	0.8987	1.3639	0.0000

After calculating the pair wise distances, we can check whether the number of substitutions seems to differ between codon position, which it in our example most certainly does.

Note that, if the species are not closely related (take, for example, human and frog) the sequences might have evolved so, that there actually are more amino acid changes than silent substitutions. If the species are assumed to be closely related, this pair wise distance matrix can be used also as a prescreening method of the validity of molecular clock (before testing it by dnaml and dnamlk). Then we can form different groups of species with which to test the clock (e.g., closely and distantly related).

Dnaml, HMM, gamma distribution and rate heterogeneity

Program dnaml implements two different layers of base substitution rate heterogeneity:

Settings for this run:

```

U          Search for best tree?      Yes
T          Transition/transversion ratio: 2.0000
F          Use empirical base frequencies? Yes
C          One category of sites?     Yes
R          Rate variation among sites? constant rate
W          Sites weighted?            No
S          Speedier but rougher analysis? Yes
G          Global rearrangements?      No
J  Randomize input order of sequences? No. Use input order
O          Outgroup root?             No, use as outgroup species 1
M          Analyze multiple data sets? No
I          Input sequences interleaved? Yes
0  Terminal type (IBM PC, ANSI, none)? IBM PC
1  Print out the data at start of run  No
2  Print indications of progress of run Yes
3          Print out tree              Yes
4          Write out trees onto tree file? Yes
5  Reconstruct hypothetical sequences? No

```

The first layer model the rate heterogeneity by a hidden Markov model (HMM). A specific HMM is constructed for every sequence site on the basis of the observed data. This is done automatically, and dnaml may not work well with a small number of sequences (less than ten), because there is not enough data for the accurate HMM estimation.

“HMM allows us to specify with option "c" to the program that there will be a number of different possible evolutionary rates, what the prior probabilities of occurrence of each is, and what the average length of a patch of sites all having the same rate. The program then computes the likelihood by summing it over all possible assignments of rates to sites, weighting each by its prior probability of occurrence. There is also a possibility to set that the rates in adjacent sites are correlated with each other with option "a".” (Felsenstein, PHYLIP documentation)

“Another layer of rate variation is also available. The user can assign categories of rates to each site (for example, we might want first, second, and third codon positions in a protein coding sequence to be three different categories. This is done with the categories input file and the C option. We then specify (using the menu) the relative rates of evolution of sites in the different categories. For example, we might specify that first, second, and third positions evolve at relative rates of 1.0, 0.8, and 2.7.” (Felsenstein, PHYLIP documentation)

There is also a possibility to change the gamma-distribution shape parameter with option "r". This will estimate the gamma-corrected distances between OTUs with a HMM model.

Gamma-corrected distances can be used in addition to the aforementioned categories (option "c").

At the moment the gamma-parameter can not be directly estimated, but it can be inferred by an iteration method described in the section Estimating the transition/transversion ratio. After the iteration, the best tree can be compared to the tree without rate heterogeneity by the likelihood ratio test with $df=1$ (see, Testing molecular clock) or by Kishino-Hasegawa test using user trees (see, Statistical tests of trees).

“If both user-assigned rate categories (with categories file) and regional rate variation (the Hidden Markov Model rates) are allowed, the program assumes that the actual rate at a site is the product of the user-assigned category rate and the Hidden Markov Model regional rate. This may not always make perfect biological sense: it would be more natural to assume some upper bound to the rate. Nevertheless you may want to use both types of rate variation.” (Felsenstein, PHYLIP documentation)

Multiple outgroups

“It's not a feature but is not too hard to do in many of the programs. In parsimony programs like mix, for which the “w” (weights) and “a” (Ancestral states) options are available, and weights can be larger than 1, all you need to do is:” (Felsenstein, PHYLIP documentation)

- (a) In mix, make up an extra character with states 0 for all the outgroups and 1 for all the ingroups. If using dnaphars the ingroup can have (say) "G" and the outgroup "A".
- (b) Assign this character an enormous weight (such as Z for 35) using the “w” option, all other characters getting weight 1, or whatever weight they had before.
- (c) If it is available, Use the “a” (Ancestral states) option to designate that for that new character the state found in the outgroup is the ancestral state.
- (d) In mix do not use the “o” (Outgroup) option.
- (e) After the tree is found, the designated ingroup should have been held together by the fake character. The tree will be rooted somewhere in the outgroup (the program may or may not have a preference for one place in the outgroup over another). Make sure that you subtract from the total number of steps on the tree all steps in the new character.

“In programs like dnaphars, you cannot use this method as weights of sites cannot be greater than 1. But you do an analogous trick, by adding a largish number of extra sites to the data, with one nucleotide state ("A") for the ingroup and another ("G") for the outgroup. You will then have to use retree to manually reroot the tree in the desired place.” (Felsenstein, PHYLIP documentation)

Error messages

Here are some of the most commonly encountered error messages, and what to do to correct them. The first three are not actually error messages at all, but an essential part of the normal function of the programs.

1. There is no infile in the directory you are running the program from, and the program asks for the name of the input file. This is easily corrected: Type in the name of the input file (sequence alignment file).

```
dnapars.exe: can't find input file "infile"
Please enter a new file name>
```

2. There is already an “outfile” in the same directory you are running the program from. You have to decide whether to replace (overwrite) it, append it, or quit. You can also specify a new outfile name.

```
dnapars.exe: the file "outfile" that you wanted to
use as output file already exists.
Do you want to Replace it, Append to it,
write to a new File, or Quit?
(please type R, A, F, or Q)
```

3. There is already an “outtree” in the same directory you are running the program from. You have to decide whether to replace (overwrite) it, append it, or quit. You can also specify a new outtree name.

```
dnapars.exe: the file "outtree" that you wanted to
use as output tree file already exists.
Do you want to Replace it, Append to it,
write to a new File, or Quit?
(please type R, A, F, or Q)
```

4. There is probably an “infile” in the same directory you are running the program from. The problem is that this infile is in a format that the current program can’t use. For example, you might have renamed a distance matrix as infile when creating neighbor joining trees. You might now be using dnapars program, which does not know how to read distance matrix, because it expects to find sequences in the file. Rename or remove the infile, and the error should disappear.

```
ERROR: a function asked for an inappropriate amount of memory:  -4 bytes
This can mean one of two things:
1. The input file is incorrect (perhaps it was not saved as Text),
2. There is a bug in the program.
Please check your input file carefully.
If it seems to be a bug, please mail joe@gs.washington.edu
with the name of the program, your computer system type,
a full description of the problem, and with the input data file.
(which should be in the body of the message, not as an Attachment).
Hit Enter or Return to close program.
You may have to hit Enter or Return twice.
```

5. You are probably trying to use a wrong kind of data in the current program. This error message is related to the sequence type: you have used amino acid sequences as input in the DNA sequence analysis program. Use the correct input file, and the error should disappear.

```
ERROR: bad base: F at site      1 of species      1
Hit Enter or Return to close program.
You may have to hit Enter or Return twice.
```

A similar kind of error message is the following one, which is corrected in a similar fashion.


```
The infile is of the wrong type
Hit Enter or Return to close program.
  You may have to hit Enter or Return twice.
```

Also this error is created with using the wrong kind of input into the program:

```
Unexpected End of File
Hit Enter or Return to close program.
  You may have to hit Enter or Return twice.
```

Scripting

Scripting can be used for automating some analyses, when needed. It is especially attractive in UNIX / Linux system where jobs can be submitted to a queue. It is also a good idea in Windows / DOS environment, for example, if several analyses need to be run over the weekend: script can do the analysis during weekend and organize the results so that they are easily checked by human eye on Monday morning. Scripting means that a file, which contains a list of directives is created, and instead of running the individual programs, the script is executed.

Scripting in UNIX

Scripting in UNIX is much more simple than in DOS. Let's create an example script which runs dnaml analysis for the dataset alveolata.phy. First, we need to find out, which are the commands and options we need for running dnaml, so start the program. Let's also start the work in an empty directory, where outfiles or outtrees are not present from previous analyses, but which contains the sequence alignment file and the appropriate phylip program (here dnaml). When running, dnaml first asks for a filename, and then the menu appears. We want to use taxon 8 as an outgroup in this example, so we invoke option O, and give it a number 8. After that, we want to run the analysis, which starts in dnaml by typing Y. Now our script looks like following:

```
#!/bin/csh/
dnaml <<EOF
alveolata.phy
O
8
Y
EOF
```

Save the script in a file called batch (you can modify this), and submit it for running by typing, e.g., "source batch" in the command prompt.

Scripting in DOS

Let's next do the same analysis using scripts in DOS. In DOS we need two files, the batch, which starts the run and another file, which contains all the options to be used as input in dnaml. In DOS batch files have an identifier .bat, and make sure you save the file with this extension. Otherwise DOS will not run the script at all!

So, first we create the file batch.bat in the empty directory containing only the sequence alignment and the program dnaml. The file contains just one line, which tells the computer to run dnaml from the same directory, and that file input.txt contains the options for the dnaml run. Batch.bat looks like following:

```
dnaml < input.txt
```

If you like to save the text dnaml normally writes on the screen in a file called screenout.txt, use the following line instead:

```
dnaml < input.txt > screenout.txt
```

Now the file input.txt contains the same sequence of options as the batch file created for UNIX analyses, and it looks as follows:

```
alveolata.phy
0
8
Y
```

You can start the dnaml -script in DOS by double clicking on its icon.

More advanced scripts

I like using scripts in DOS for doing multiple analyses, because it is easier to modify the batch-file than to run several programs separately. The following DOS script runs dnaml for the dataset (sequence alignment) alveolata.phy, calculates topological distance between all the best trees (see Computing topological distances between trees) and finally performs the Templeton test (see Statistical tests of trees).

The file batch.bat looks like this:

```
dnaml < input1.txt > screenout1.txt
copy outtree parsimony-tree-outtree.txt
rename outtree intree
rename outfile parsimony-tree-outfile.txt
treedist <input2.txt > screenout2.txt
rename outfile treedists-outfile.txt
dnaml < input3.txt > screenout3.txt
```

The settings for individual programs are in the files input1.txt, input2.txt and input3.txt.

```
Input1.txt:
alveolata.phy
0
8
Y
```

Input2.txt:

2
P
F
Y

Input3.txt:

alveolata.phy
U
O
8
Y

After creating these four files, start the run by double-clicking on the batch.bat. The results appear in four separate files: parsimony-tree-outtree.txt and parsimony-tree-outfile.txt (trees from initial parsimony analysis), treedists-outfile.txt (topological distances), and templeton-outfile.txt (Templeton's test).

Recommendations

These recommendations cover some aspects of the actual phylogenetic data analysis that were not discussed in the examples above. You should adapt the data analysis recommendations here, because they highlight some of the most commonly encountered problems.

Some pragmatic warnings

1. Always use several outgroups, if possible. This way you can check that all outgroups really are outgroups.
2. Each method has different inherent weaknesses, and it might be a good idea to try several methods, because they have strengths in different areas. Try parsimony, maximum likelihood, and minimum evolution with LogDet-distances, and compare the results. If all the methods produce more or less the same tree, then your data apparently doesn't have any major pitfalls. Hint: you can compare different trees visually, but also using program treedist.

"Maximum parsimony can be mislead if there is too much heterogeneity in substitution rates among lineages (the classic "long edges attract" problem) in the underlying true phylogeny. Minimum evolution using LogDet distances can be mislead if there is too much site-to-site rate heterogeneity, or if some of the pairwise distances are undefined (use the "showdist" command to check). Maximum likelihood under the HKY-gamma model can be mislead if parameters that are assumed to be constant across the phylogeny (such as the ratio or base frequencies) actually vary among lineages in the true phylogeny." (David Swofford, PAUP FAQ, <http://paup.csit.fsu.edu/paupfaq/faq.html>)

"For example, if there is strong rate heterogeneity in your data (let's say the shape parameter is estimated to be 0.01), then the LogDet and parsimony trees fall under a certain degree of suspicion compared to the likelihood tree, which should be relatively immune to this pitfall since the model used allows for rate heterogeneity. If the parsimony tree differs from the LogDet and likelihood tree, look for evidence of long branch (edge) attraction in the parsimony tree. If the LogDet tree differs from the parsimony and likelihood trees, see if the base frequencies vary considerably between tip taxa (a useful

tool for this purpose is the basefreq command)." (David Swofford, PAUP FAQ, <http://paup.csit.fsu.edu/paupfaq/faq.html>)

3. Always bootstrap or jackknife your dataset. These methods will help you determine how sensitive your results are to changes in dataset.
4. Try excluding one taxon from the analysis. If the result changes dramatically, then the excluded taxon causes systematic errors. In ideal case, the trees would be identical before and after exclusion.
5. If you're analyzing several genes, different genes might or might not produce the same results. If the results are discordant, then check your data for non-orthologous genes (if you're interested in species phylogenies), because they might cause trouble. Other sources of systematic errors, like lateral or horizontal gene transfer may confound the analysis, also.

Phylip programs

PHYLP programs classified according to the material and method

	Maximum likelihood	Parsimony	Distance matrix	Lake's invariants	Reliability
DNA	dnaml*** dnamlk****	dnapars dnapenny DNAmove*****	dnadist* Fitch*** Kitsch**** Neighbor**	dnainvar	dnacomp Seqboot
Protein	Proml Promlk	Protpars	Protdist* Fitch*** Kitsch**** Neighbor**		Seqboot
Restriction sites			Restdist* Fitch*** Kitsch**** Neighbor**		Seqboot
Continuous characters	Contml		Fitch*** Kitsch**** Neighbor**		Seqboot Contrast
Discrete characters		Pars Mix Penny Move***** Dollop Dolpenny Dolmove***** Factor			Clique
Tree drawing	Drawgram Drawtree Consense Treedist Retree				

* utilized for matrix calculation

** NJ and UPGMA

*** FM without molecular clock

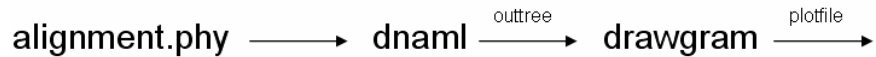
**** FM with molecular clock

***** interactive tree building

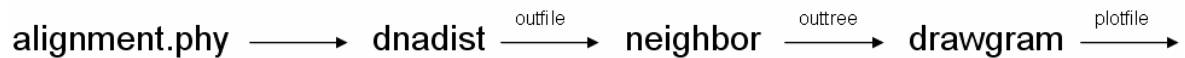
Flow charts

The following data flow charts describe some basic analyses. Flow chart A describes a maximum likelihood analysis for DNA sequences. Flow chart B describes an analysis using neighbor joining method for DNA sequences. Flow chart C describes a bootstrapping analysis for DNA sequences using maximum likelihood as the analysis method.

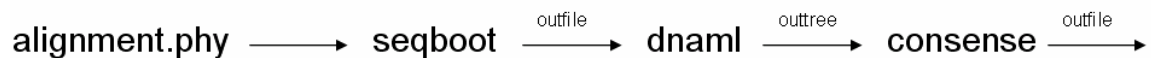
A



B



C



In order to assess the reliability of the data using bootstrapping method, you should first make the conventional analysis (flow chart A) using whatever analysis method is suitable for your purposes. After that, you should perform bootstrapping analysis (flow chart C) using exactly the same analysis method you used for conventional analysis. Here, we have used program dnaml for maximum likelihood analyses, but it can be substituted with, *e.g.*, dnapars for parsimony analysis or dnadist + neighbor for analysis using distance methods. Note that in bootstrapping analysis using dnaml, dnapars *etc.* it might not be advisable to use as many jumbles as in the conventional analysis, because the analysis programs will then perform a specified number of jumbles for every random sequence dataset, and that might take a very long time.

Phylip is freely available from <http://evolution.genetics.washington.edu/phylip.html>.

PHYLIP -- Phylogeny Inference Package (Version 3.2).
Felsenstein, J. 1989. *Cladistics* **5**: 164-166